

NEC Global Smart City

NEC Indonesia
November 2023

NEC at a Glance

289+
group companies
doing business in
50+ countries



Established

1899



Revenue

Over
¥3,014.1B
in annual revenue



Employees

117,000



Patents

45,000



AI
Researchers

1800



Tech Leadership

World
No. 1



Face
Recognition



Iris
Recognition



Fingerprint
Recognition



Rate of contribution
Approx

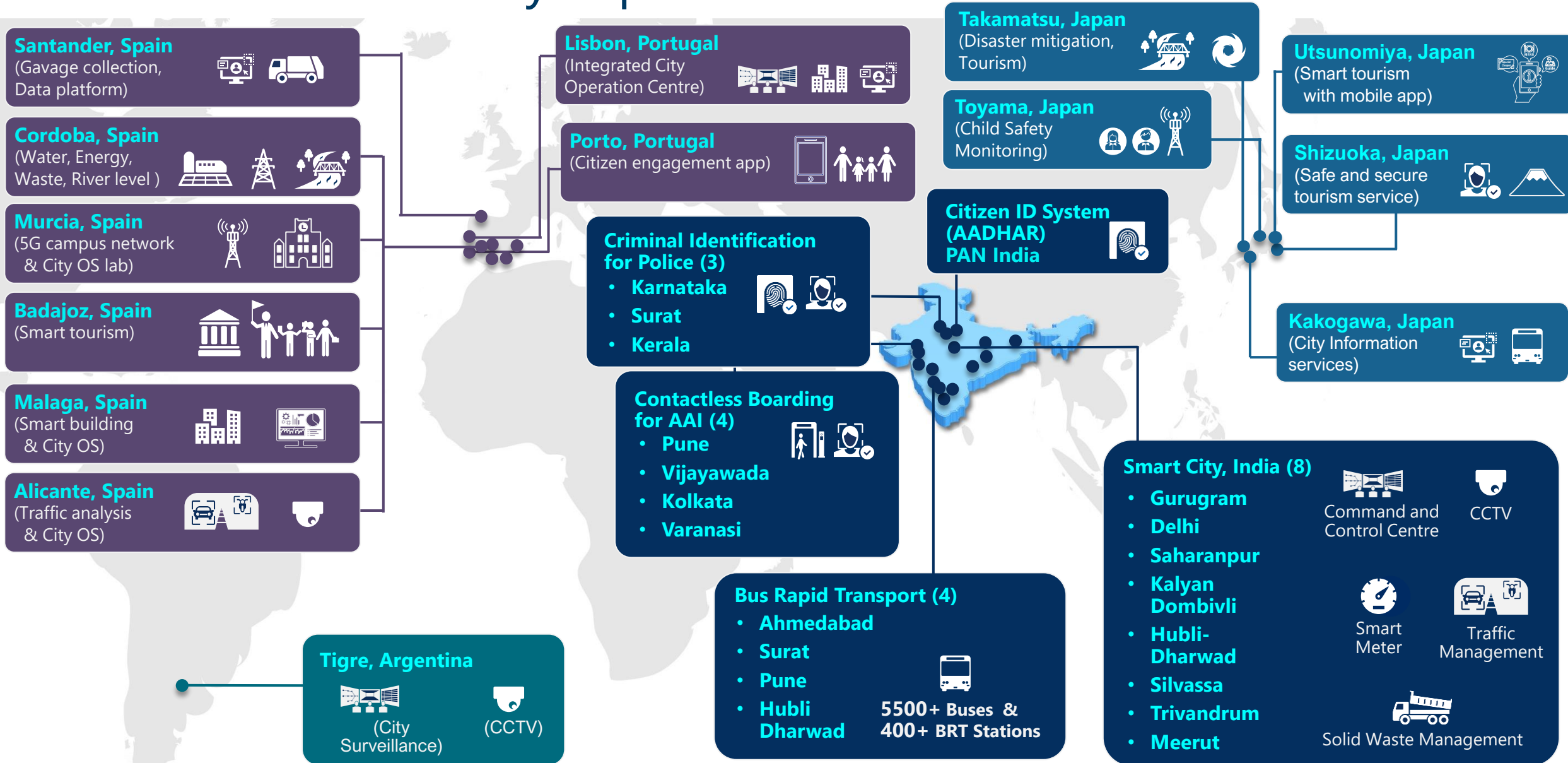
5.2 times
to CO2 emission reductions
across supply chain



A List

Inclusion in the CDP
Climate Change and
Water A List

NEC Global Smart City Experience



NEC Smart City solution

Single, Unified Platform for City & Business Operations



Real-Time Predictive Analytics

- Utilizes advanced algorithms & machine learning capabilities.
- Proactively anticipates urban challenges.
- Enables pre-emptive decision-making.
- Reduces response time in critical situations.



Cross-Domain Integration

- Seamless integration of data from multiple domains.
- Holistic insights for effective urban management.
- Cross-sector collaboration enabled for better decision-making.



Intelligent Resource Optimization

- Real-time data analysis optimizes resource allocation.
- Minimizes wastage & maximizes efficiency across city services.
- Leads to cost savings & improved sustainability.



Proactive Risk Mitigation

- Advanced risk prediction and early warning system in ICC.
- Identifies potential threats in advance (floods, traffic congestion, etc.).
- Enables authorities to take preventive measures and ensure citizen safety.

Case Study

Smart City, Lisbon

Enhanced city operations through collaborative and **Intelligent Management Platform** integration with orchestrating **200+** data sets from **140+** external systems including **16,000** sensors

Key Challenges

- **Information spread** across applications
- **Limited collaboration** between institutions
- **Reactive and sporadic** city management

NEC Solution

- Implementation of the **Lisbon Intelligent Management Platform**
- Collects, stores and analyzes data sources via AI, IoT and open APIs
- Open architecture platform

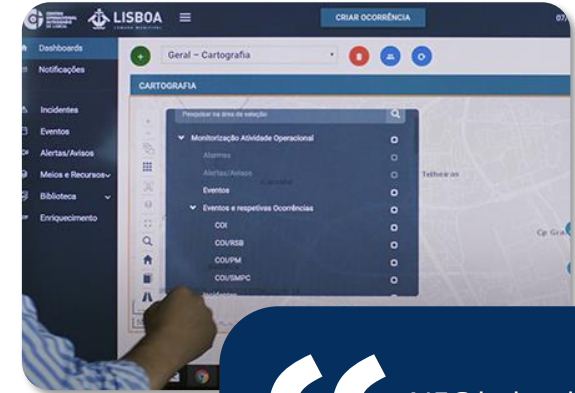
Impact Delivered

Efficient Management
of the city operations

Improved Air Quality

Reduced Traffic Congestion

Improved emergency response times



“ NEC helped Lisbon Council aggregate, manage and optimize data from internal information systems and 30+ public and private institutions to improve transport safety, resource management and sustainability.
NEC Solutions Smart City, Region Portugal

Links

https://www.nec.com/en/case/lisbon_council/index.html
https://www.youtube.com/watch?v=fEcy8q_642s

Case Study

Smart City, Takamatsu

Wide Area Disaster Management platform with FIWARE technology - supports prompt decision-making through situational analysis on integrated data source.

Platform shared among **3 Local Municipalities**



Key Challenges

- **Decision-making takes longer time** as no real-time data collected for flood monitoring
- **No shared disaster management platform** and limited information sharing among cities



NEC Solution

- **Real-time data collection** to support better understanding of disaster situations
- **Integrated data collaboration platform** for wide-area disaster management among three municipalities



Impact Delivered



Higher precision and real-time understanding of the situation



More appropriate and timely decision-making for evacuation order announcements to residents



Prompt and inter-operable information collaboration among the cities



Takamatsu was the first city in Japan to introduce FIWARE, implemented by NEC and move forward to fully leverage IoT. It has now become a highly visible reference in Japan attracting the attention of many other Japanese municipalities.

**NEC Solutions Smart City,
Region Japan**

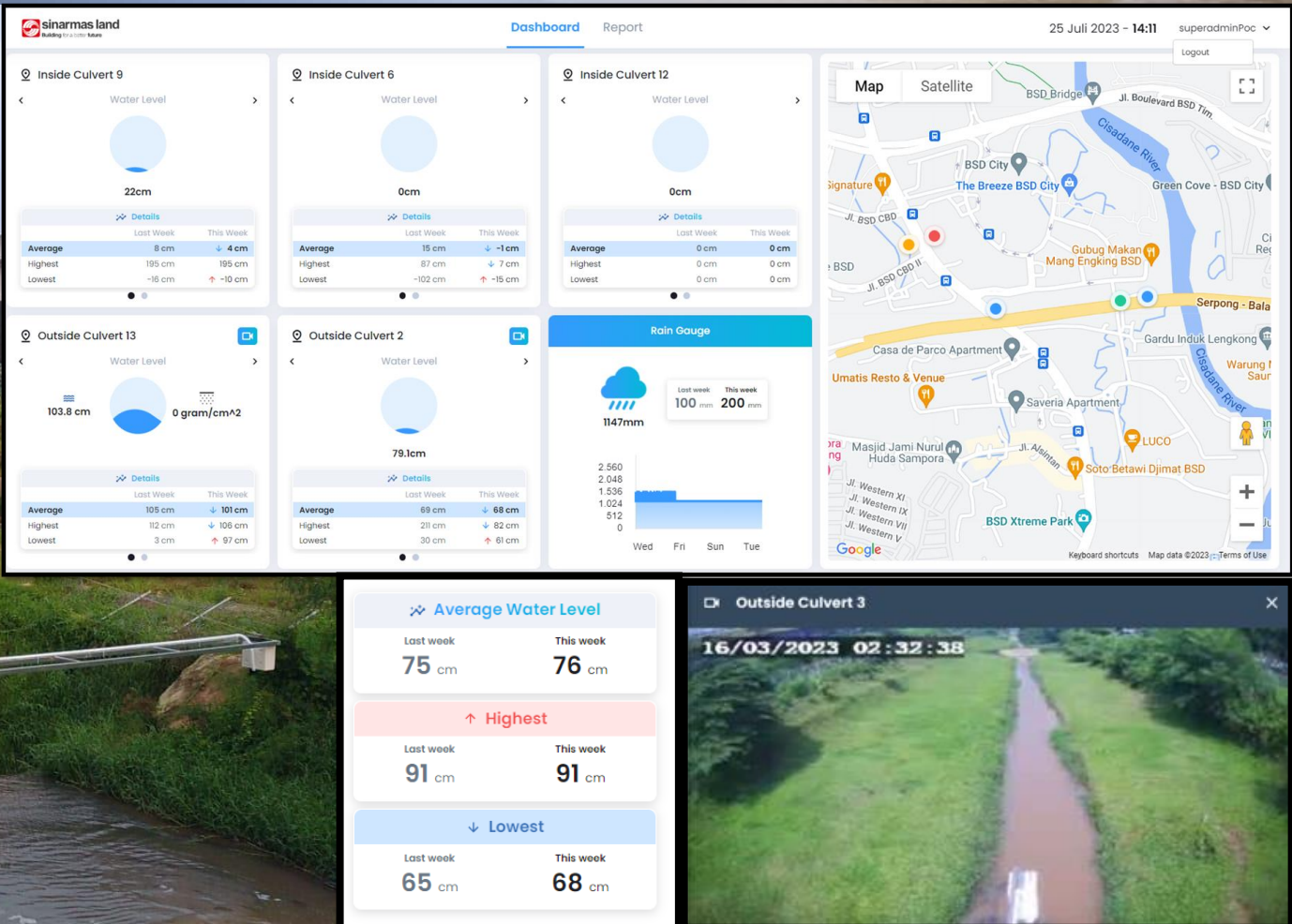
Links

https://www.nec.com/en/global/csr/eco/pdf/2020_02.pdf
<https://jpn.nec.com/techrep/journal/g18/n01/180106.html>

Case Study (PoC)

Smart City,
BSD city, Indonesia

Smart Drainage solution
with Sinar Mas Land





Discover . Connect . Empower



Unleash the Power of
Citizen Engagement
for a Resilient and
Secure Future



Mi-Command

Single, Unified
Platform for Efficient
City Operations



\Orchestrating a brighter world

NEC