

Smart Island Pilot Project in South Sulawesi, Indonesia

OC Global is a leading, integrated engineering consulting firm committed to excellence, innovation and sustainability.



Years of the Establishment

1957



Number of employees

1,155

as of 1st of August 2022
(including Overseas Subsidiaries)



Annual sales

US\$205 mil

(2020-21)



Countries worked

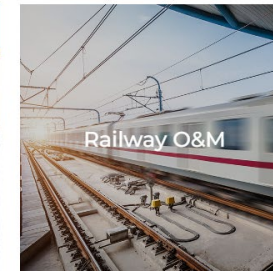
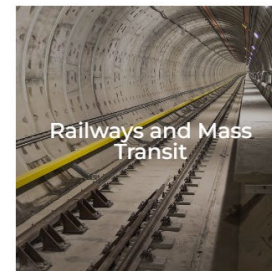
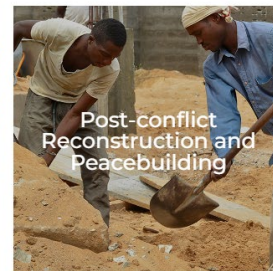
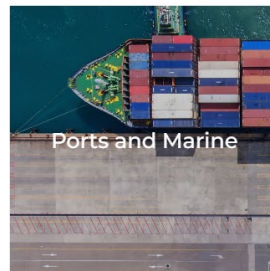
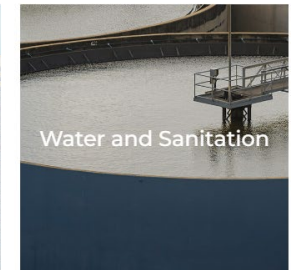
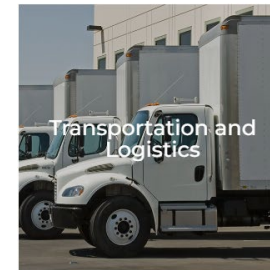
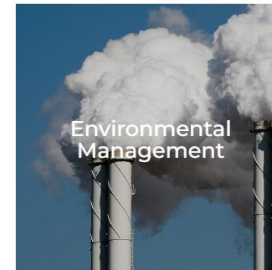
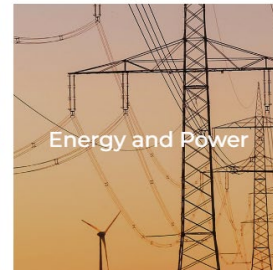
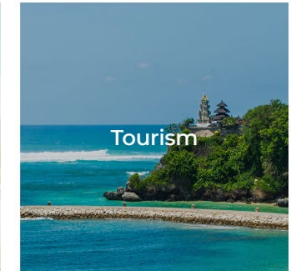
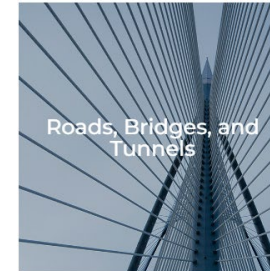
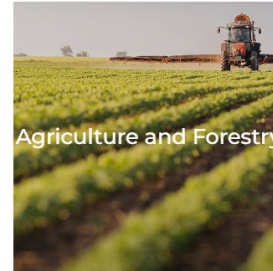
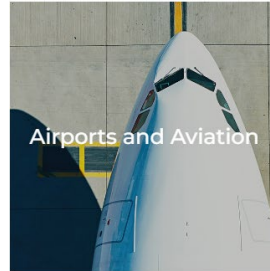
150+

Sectors

- Agriculture and Forestry
- Airports and Aviation
- Architecture
- Disaster Recovery and Resilience
- Energy and Power
- Environmental Management
- Ports and Marine
- Post-conflict Reconstruction and Peacebuilding
- Railways and Mass Transit
- Roads, Bridges and Tunnels
- Smart Cities
- Tourism
- Transportation and Logistics
- Urban and Regional Development
- Water and Sanitation
- Water Resource Management
- Railway O&M
- Renewable Energy

Services

- Asset Management
- Capacity Building and Training
- Construction Supervision
- Design
- Design Review
- Environmental and Social Safeguards
- Feasibility Studies
- Operation and Maintenance
- Planning
- Project Formulation and Financing
- Project Management
- Studies and Investigations
- Tender Assistance



Project background

- Aug. 2021 - Feb. 2022: **MLIT Smart JAMP** feasibility study with an electric utility company
- Aug. 2022 - Feb. 2023: **JICA Indonesia** feasibility study with two electric utility companies
- Dec. 2022: Presentation at the **4th ASEAN-Japan Smart City Network High-Level Meeting**
- Oct. 2023: Declaration of the implementation at the **5th ASEAN-Japan Smart City Network High-Level Meeting**

Feasibility study result

Power Sector

- The government is aiming for 100% electrification.
- Electricity supply to some islands is only at night.

Fisheries

- Insufficient ice to keep fish fresh
- Price difference depending on the fish freshness (2x)
- Price difference in the domestic high-end market (3x)

Remote island



Mainland



Project outline

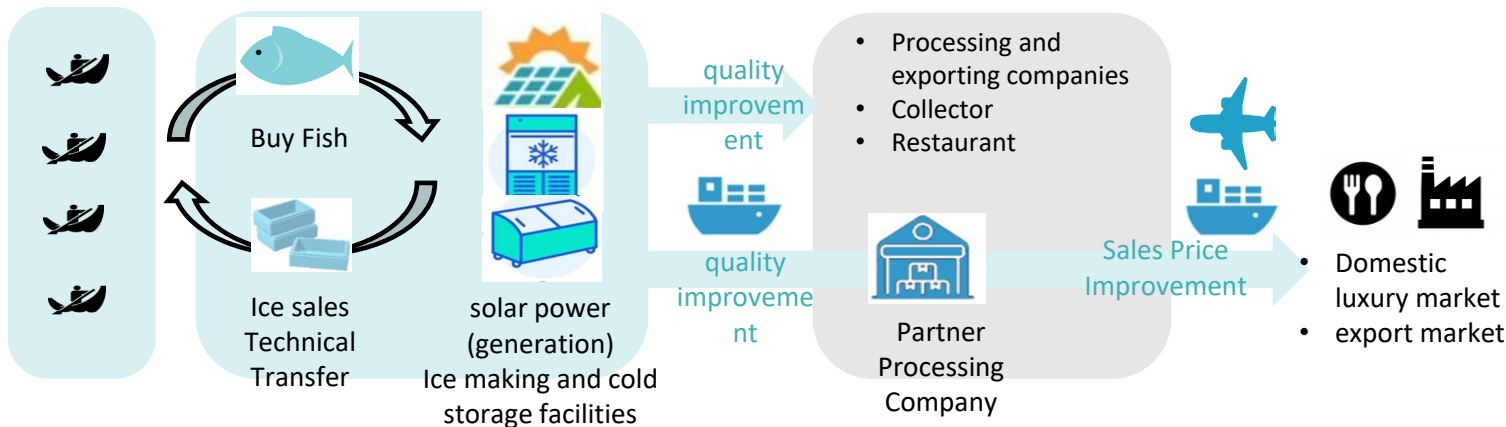
To build a **cold chain system using solar PV** in remote islands without daytime electricity.
The system will improve the fish quality and **upgrade the fishery industry on the remote islands**.

Business components

Power generation: **Generate electricity by PV + DG** during the day (no selling)
Cold chain: **Sell ice** to fishermen
Fisheries: **Buy fish** from fishermen and **sell fish** to market
Technical transfer to fishermen

Pilot Project area

- **Barrang Lompo Island, Makassar City, South Sulawesi Province**
- Population 5,000



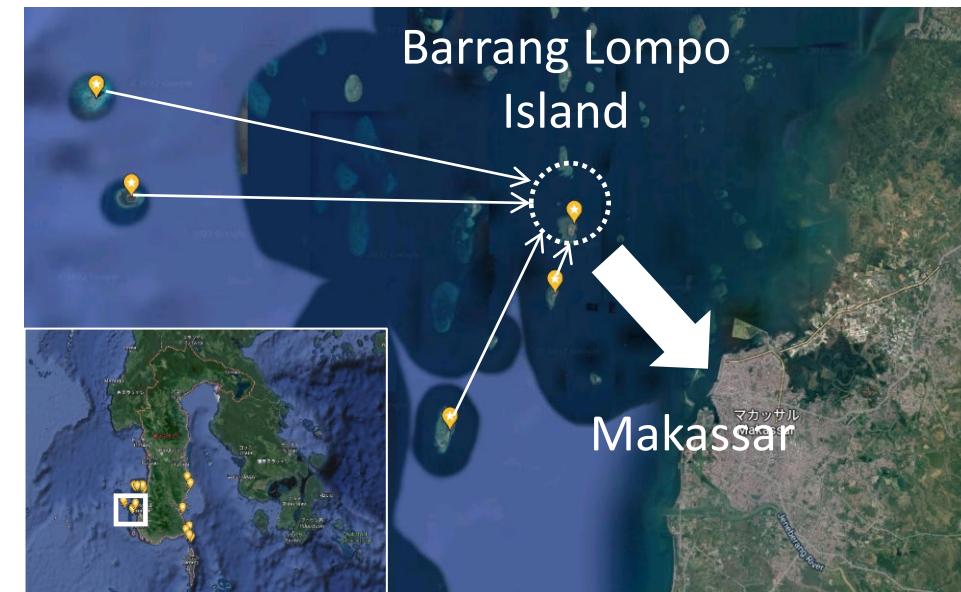
Contribution to SDGs

- 2 ZERO HUNGER**

Cold chain system helps reduce post-harvest losses, increase food availability, and improve food security
- 7 AFFORDABLE AND CLEAN ENERGY**

Renewable energy supplies electricity to the fishery industry
- 13 CLIMATE ACTION**

The carbon footprint of the fishery industry can be reduced.



Key Points of the Business

- Intervention in the fishery value chain is needed to improve quality and selling price
- It is important to build a robust business structure for these interventions.



Quality Improvement

Sales price improvement

1. Technical support

Guidance on fishing methods and ice use

Quality checks, market information, negotiations

2. Cold chain

Fishermen's Network

Ice making and cold storage facilities

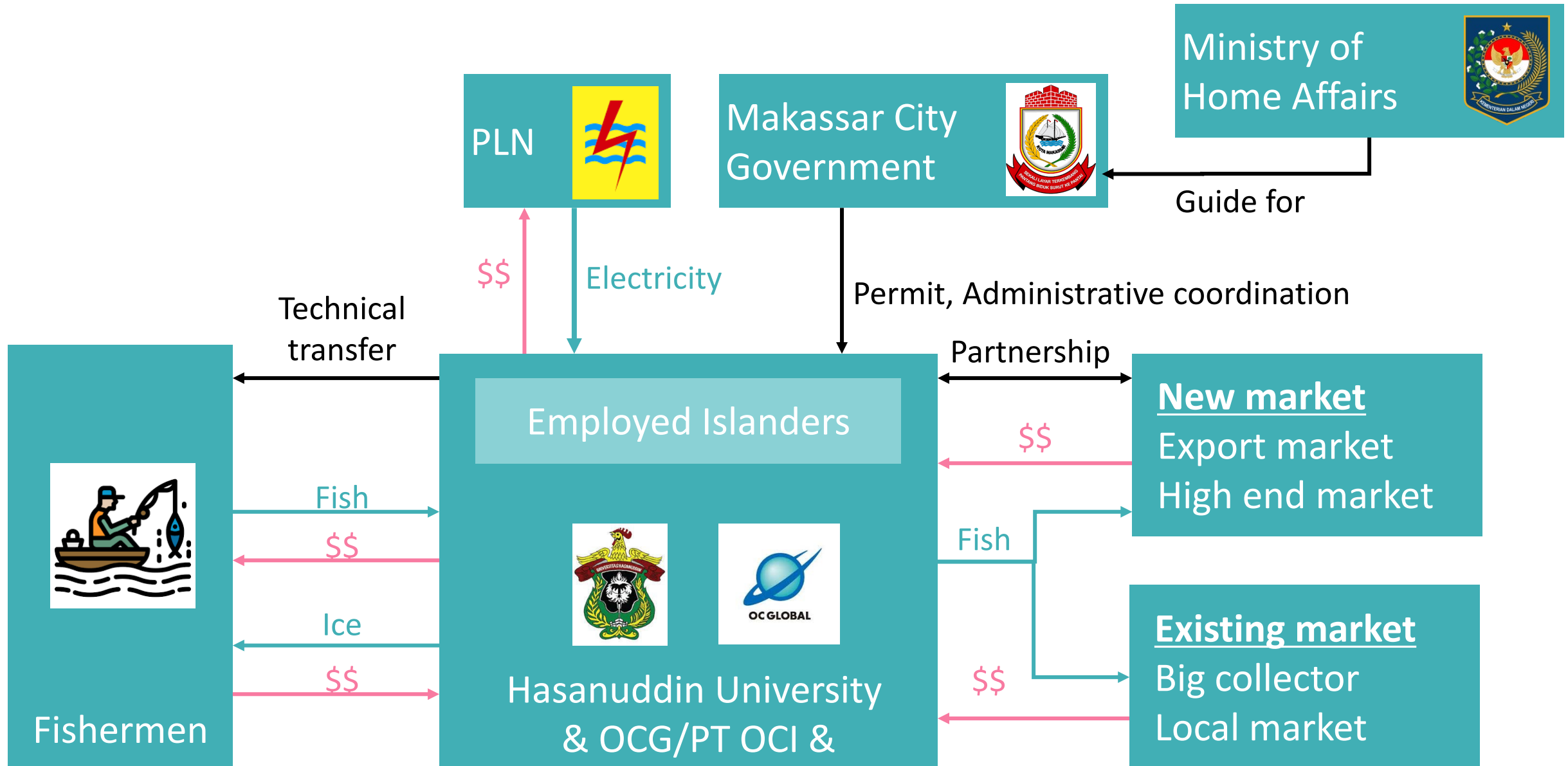
Storage and processing facilities

logistics network

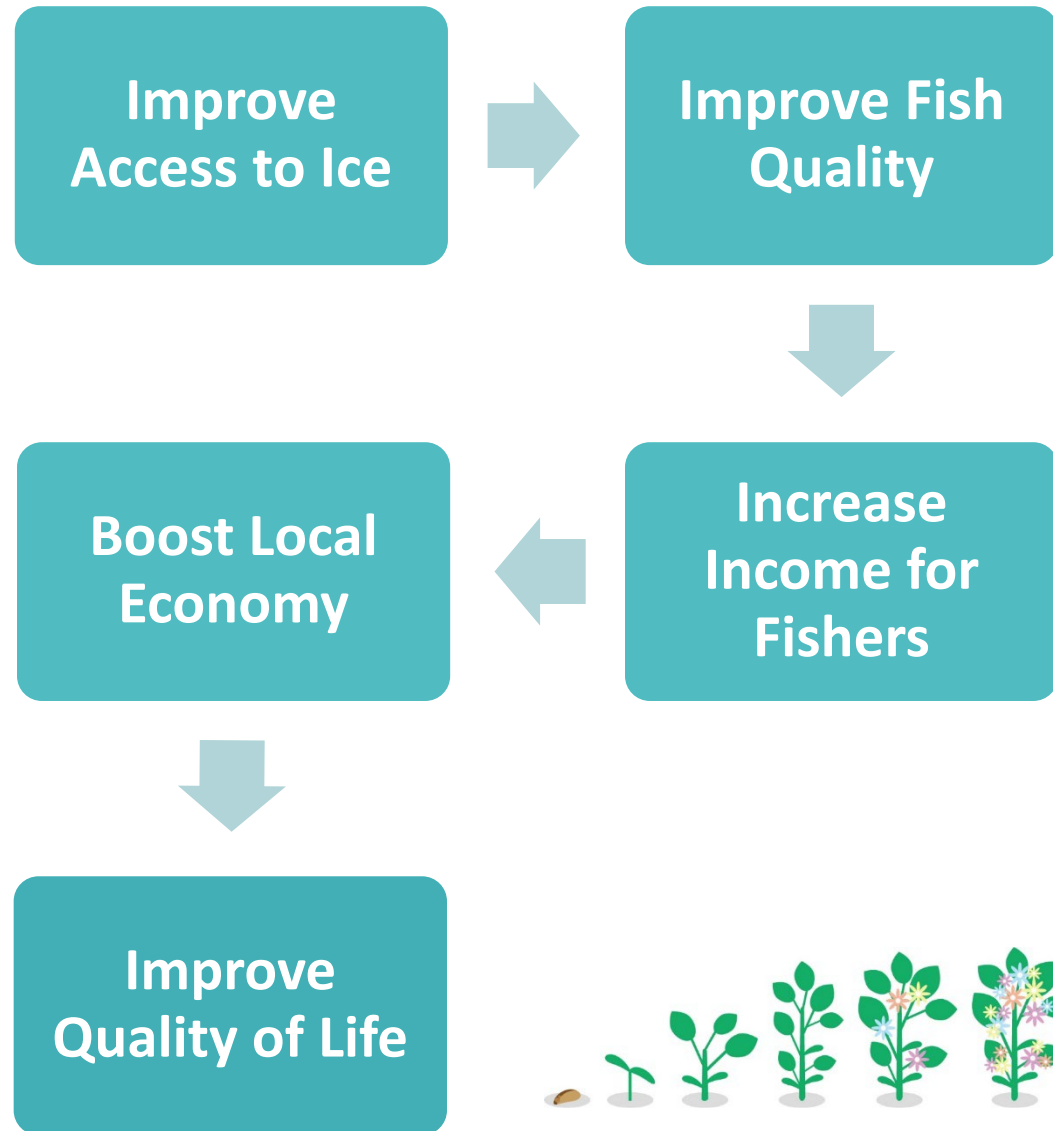
3. Sales destination

Sales Network

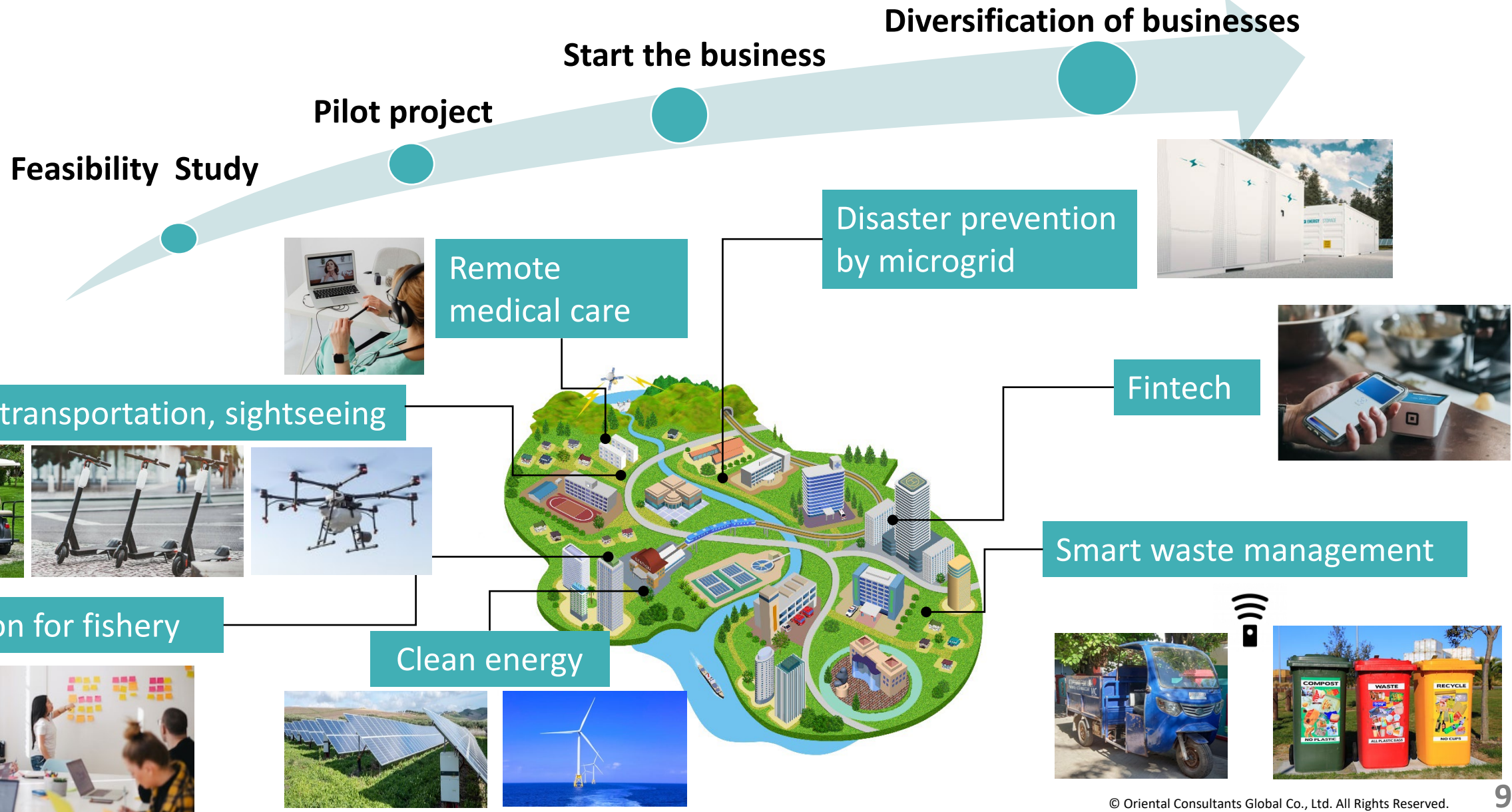
Pilot project scheme



Benefits to local community



	•Launch pilot project	•Expand region to South Sulawesi Province	•Expand region to Eastern Indonesia •Expansion of business scale	•Go for IPO
	Phase 1	Phase 2	Phase 3	Phase 4
	2024 -	2026 -	2028 -	2035 -
# of Locations	1	5-10	15-20	50-60
Business entity	PT OCI	SPC		IPO
Fund	OCG+1	JICA/JOIN/ESG Fund		



Terima kasih Thank you

Contact:

Mitsukage YAMADA, PMP, yamada-mk@ocglobal.jp

Oriental Consultants Global Co., Ltd.

Tokyo Opera City Tower 9F, 3-20-2, Nishishinjuku, Shinjuku-ku, Tokyo, 163-1409, Japan

Tel: +81-3-6311-7898 Fax: +81-3-6311-8043



<http://ocglobal.jp/>



<https://www.facebook.com/ocglobalnewvoices/>



<https://www.linkedin.com/company/oriental-consultants-global/mycompany/>