

Public Transport Integrated Payment System

Presented at JASCA Seminar and Business Matching
21 November 2023



Milestone of Jabodetabek Intermodal Payment Integration

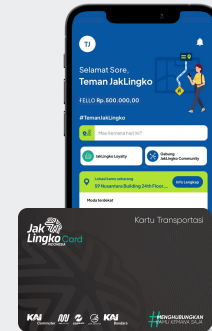


September 2017

MOU BI, Ministry of Transportation, DKI Provincial Government, Operators regarding Payment Integration

July 15, 2020

Signing of JakLingko Indonesia Shareholders



September 29, 2021

Launch of application and Transport Card

October 7, 2022

Integrated Fare Grand Launching

Coming Soon

Concession Fare

January 8, 2019

Limited Presidential Meeting, Discussion of Jabodetabek Transportation Management Policy

December 30, 2020

Establishment of PT JakLingko Indonesia



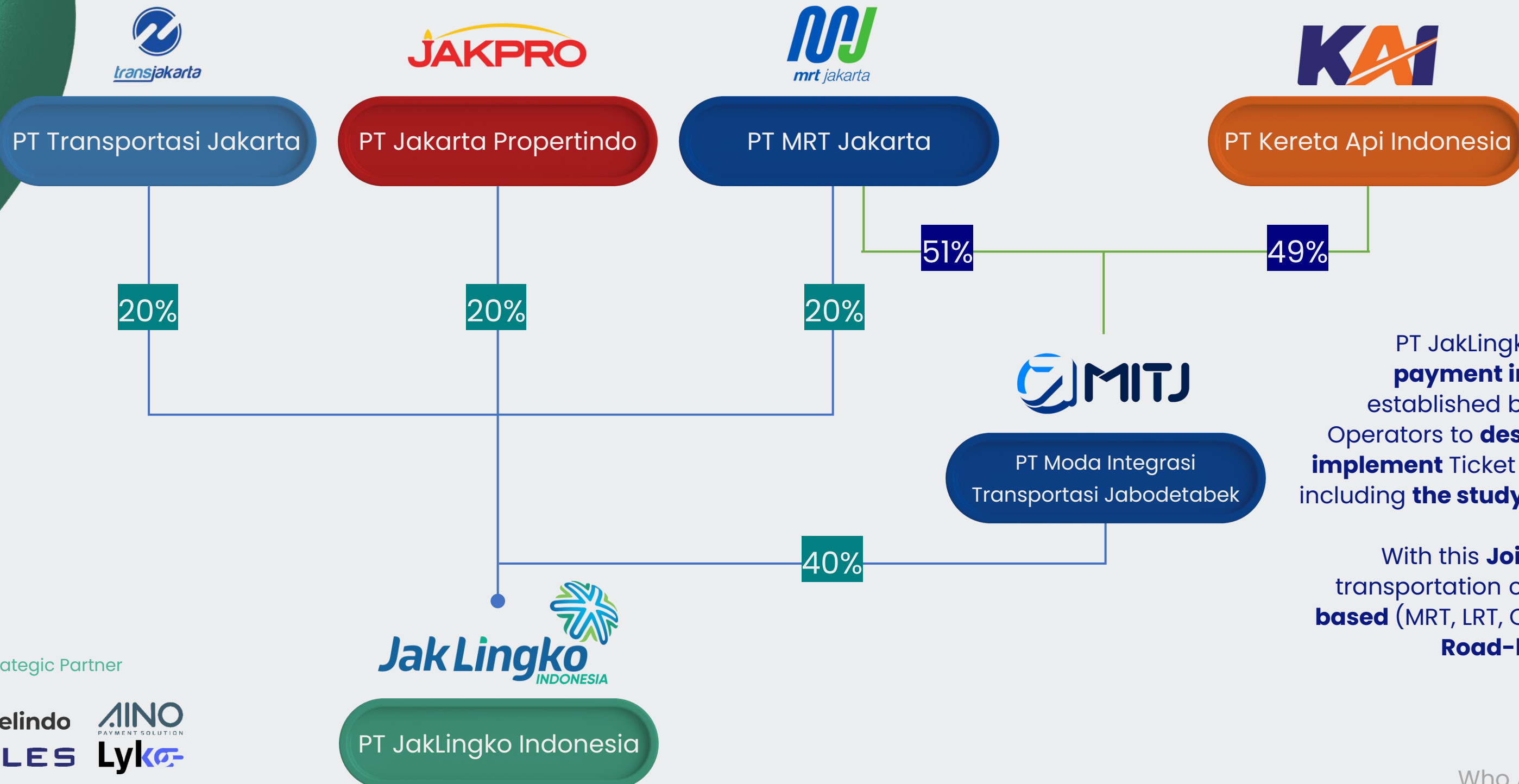
August 8, 2022

Integration fee apply to the public

Ownership Structure of PT JakLingko Indonesia

Regional-Owned Enterprise

State-Owned Enterprise



PT JakLingko Indonesia is a **new payment integration company** established by all Public Transport Operators to **design, coordinate, and implement** Ticket and Fare Integration, including **the study of new fare policies**.

With this **Joint Venture**, all public transportation can be reached: **Rail-based** (MRT, LRT, Commuter Train) and **Road-based** (Transjakarta)

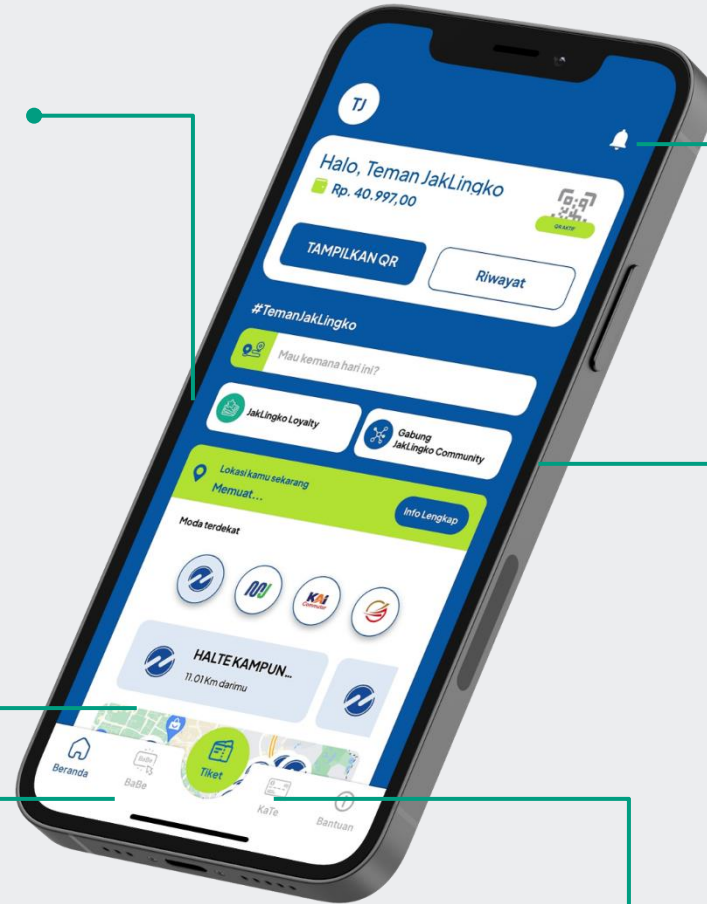
The Products

In Apps News
Let's find out the latest news

Estimated Time of Arrival
For Transjakarta, MRT Jakarta, KRL Commuter, and LRT Jakarta

PPOB
You can pay your BPJS Kesehatan, Electricity, Phone Credit, and many more to come

Standarisasi Kartu Uang Elektronik
All the electronic money card can be standardized into a transportation card



Digital Content
Push Notification, Pop Up Banner, Ads Banne In-Apps



Journey Planner/ Public Transport Marketplace
With Public Transportation, Grab, and many more to connected

Kartu Transportasi
Connect your transportation card to the JakLingko application



Central Clearing House System *CCHS*



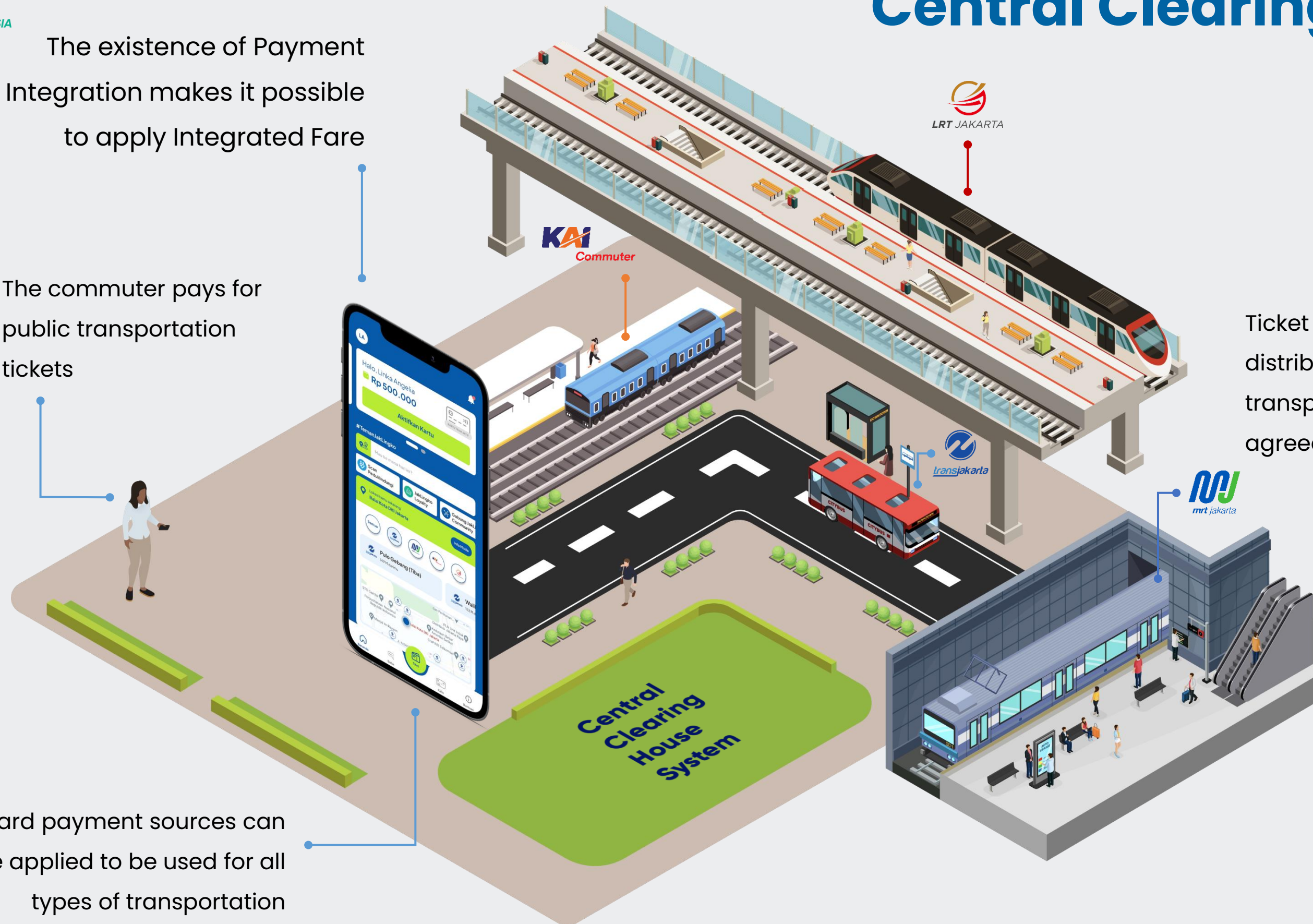
Central Clearing House Systems

The existence of Payment Integration makes it possible to apply Integrated Fare

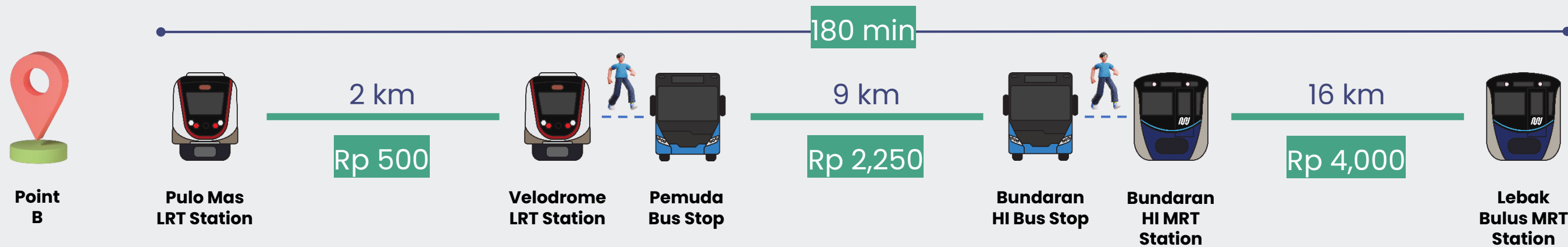
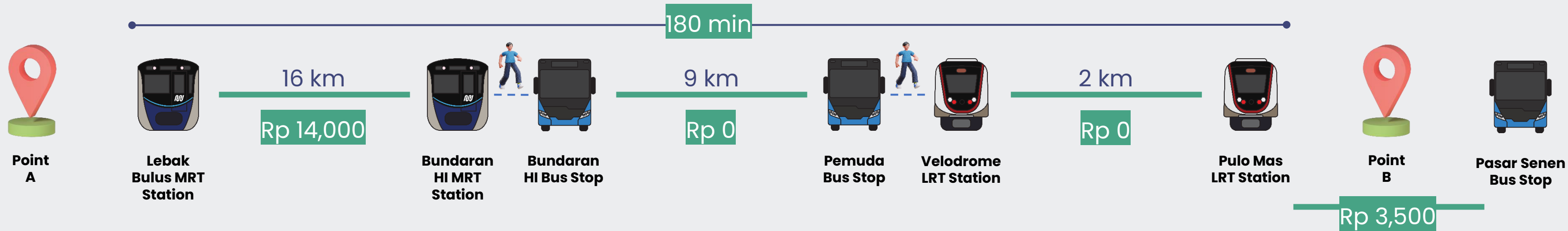
The commuter pays for public transportation tickets

Standard payment sources can be applied to be used for all types of transportation

Ticket payments by the public are distributed by CCHS to all transportation operators with an agreed methodology and SLA.

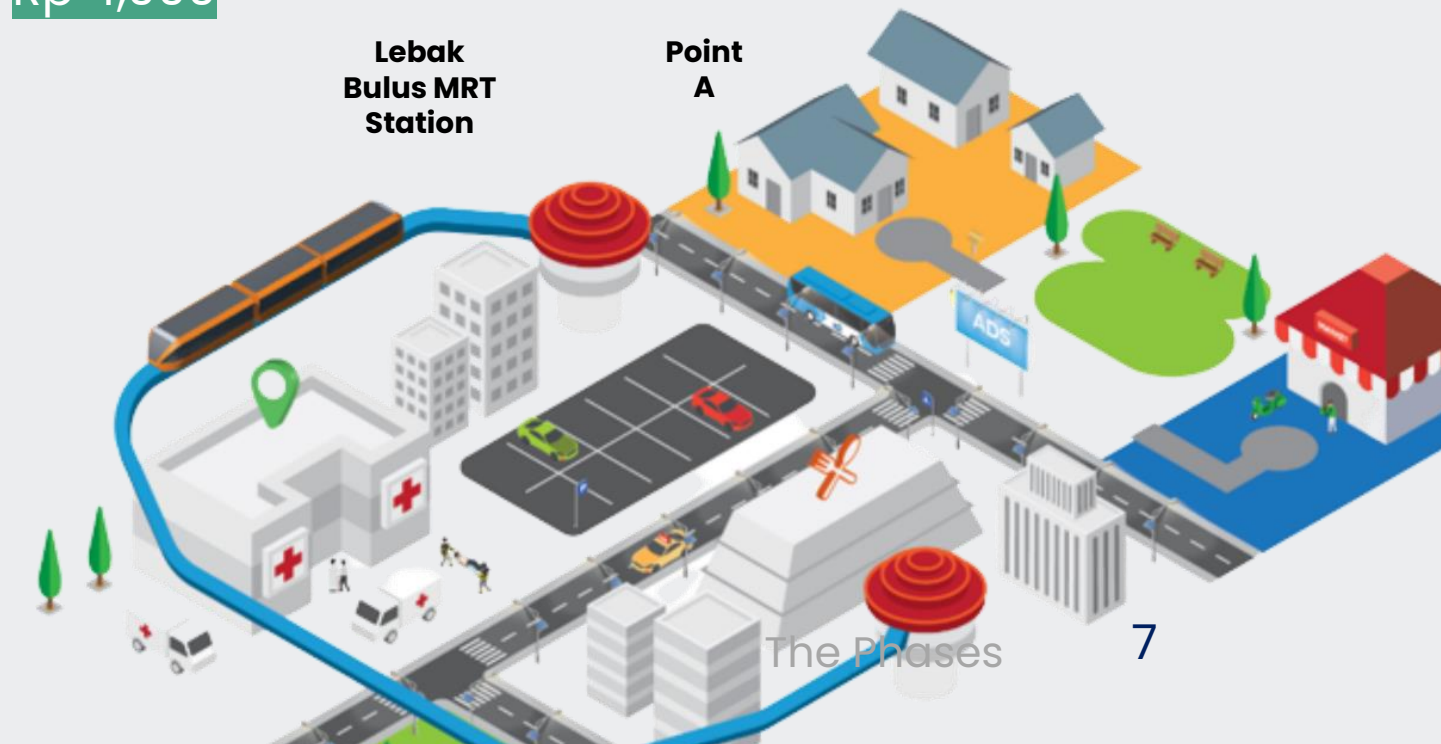


JakLingko has the capability to accommodate Complex Fare Structure such as Single-Multi Integrated Fare in Jakarta



Multimode Integrated Fare Scheme

| | | |
|-------------------|------|--------|
| Boarding Charges | : Rp | 2,500 |
| Distance fare/ km | : Rp | 250 |
| Fare Cap | : Rp | 10,000 |



Mobility-as-a-Service

MaaS



JakLingko Apps Product and Services

Multimodal Journey Planner : Find-Book-Pay

First Mile Last Mile Integration

←

Rekomendasi

59 Wisma Nusantara Lantai, Gondang...

1

Blok M Square, Jl. Melawai V, Melawai, ...

1

Waktu Keberangkatan

🕒 09:16

Perjalanan dengan Tarif Integrasi

!

TERHEMAT

TERCEPAT

3 Menit

Berjalan

40 Menit

TJ

48 Menit

5 Menit

Berjalan

09:26 – 10:15

Rp3.500

3 Menit

Berjalan

30 Menit

TJ

46 Menit

3 Menit

Berjalan

1 Menit

MRT

4 Menit

09:20 – 09:34

Rp38.500 – Rp41.966

2 Menit

Grab Car

10 Menit

MRT

13 Menit

1 Menit

Grab Car

09:20 – 09:34

Rp38.500 – Rp41.966

Live Tracking Bus and MiniVan (Mikrotrans)

Tangerang

🔍 Cari Halte Terdekat

0,31 km darimu

▼

Pasar Induk Kramat Jati

0,31 km darimu

▼

RS Harapan Bunda

0,31 km darimu

▼

Tanah Merdeka Arah Selatan

0,31 km darimu

▼

Ragunan

0,31 km darimu

▼

Pinang Ranti

0,31 km darimu

▼

Garuda Taman Mini

0,31 km darimu

▲

9 Pinang Ranti

Sudah Tiba

9C Pinang Ranti

Sudah Tiba

9 Pluit

Sudah Tiba

9 Pinang Ranti

Sudah Tiba

Departemen Pertanian

0,31 km darimu

▼

4:29

📶

🔋

Tangerang

South Jakarta

Depok

Cileungsi

Klapanunggal

Jonggol

Cibinong

9 Pinang Ranti

🔄

PPD 0737

0 Menit

MB 1623

0 Menit

SAF 050

4 Menit

Integrated Public Transport Schedule

Monumen Nasional

🔍 Cari Halte/Stasiun Terdekat

MRT STASIUN MRT BUNDARAN HI

0.2...

ARAH STASIUN MRT BUNDARAN HI

MRTJ / Lebak Bulus -> Bunderan HI

Waktu keberangkatan

08:18 08:28 08:38 08:48 08:58

ARAH STASIUN MRT LEBAK BULUS

MRTJ / Bunderan HI -> Lebak Bulus

Waktu keberangkatan

08:52 09:02 09:12 09:22 09:32

STASIUN KCI SUDIRMAN BARU

0.79 K...

ARAH STASIUN KCI BEKASI

Lin Lingkar Cikarang arah Cikarang

Waktu keberangkatan

09:04 09:33 09:41 09:52 10:05

ARAH STASIUN KCI ANGKE

Lin Lingkar Cikarang arah Kampung Bandan

Waktu keberangkatan

08:36 08:56 09:02 09:06 09:22

Monumen Nasional

🔍 Cari Halte/Stasiun Terdekat

STASIUN LRT VELODROME

7.47 Km dar...

ARAH STASIUN LRT PEGANGSAAN DUA

LRT Jakarta

Waktu keberangkatan

08:33 08:43 08:53 09:03 09:13

ARAH STASIUN LRT VELODROME

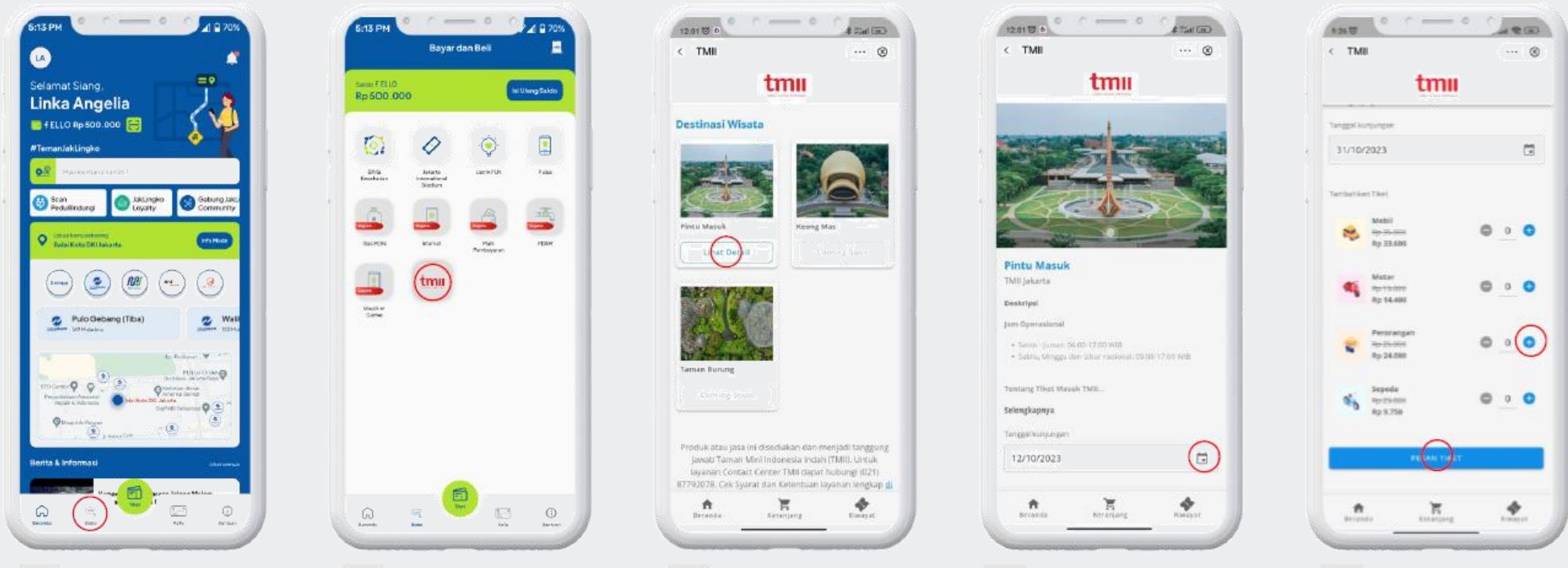
LRT Jakarta

Waktu keberangkatan

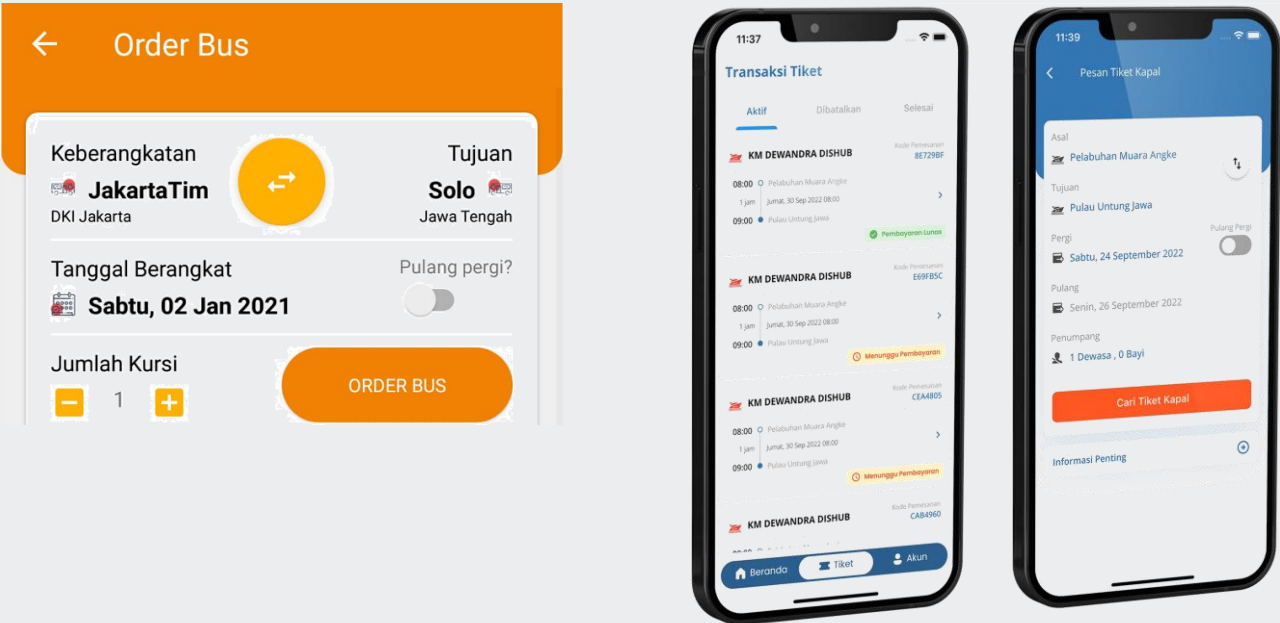
08:23 08:33 08:43 08:53 09:03

Future Development

Tourism



Intercity Bus and Water Transport



Account Based Ticketing

ABT



Stage 1: KYC
Customer signup to ABT Systems



Stage 2: Journey
Customer Scan at Gate IN

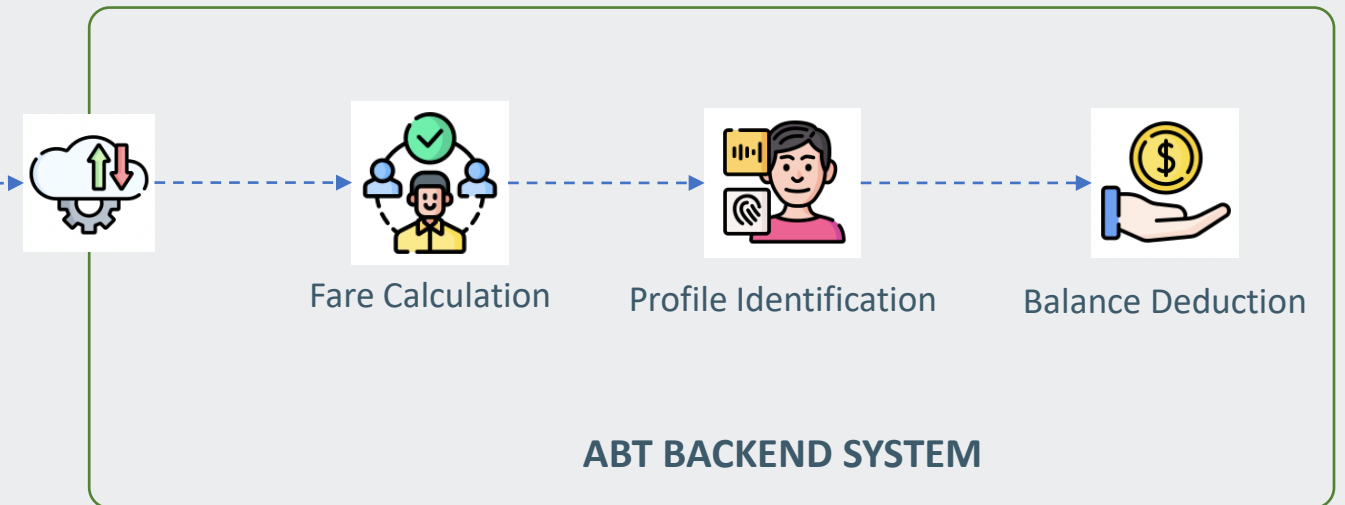


Customer Scan at Gate OUT



Stage 3: Fare Calculation

Fare is processed at the Backend System and based on Customer Profile



Fare Media

- QR Code (Apps)
- Card Based (Token)



Menghubungkan Kamu Ke Mana Saja

PT JAKLINGKO INDONESIA

Gedung Simpang Temu Dukuh Atas - Lt.5 JL. Juana No.37, Dukuh Atas, Jakarta 10310 - Indonesia



info@jaklingkoindonesia.co.id



www.jaklingkoindonesia.co.id

Terima Kasih

Informasi yang terdapat dalam presentasi ini dimaksudkan semata-mata untuk penggunaan pribadi atau entitas kepada siapa ditujukan dan lain-lainnya yang berwenang untuk menerimanya. Presentasi ini mungkin berisi informasi rahasia atau informasi pribadi. Jika anda bukan penerima yang dituju, dengan ini ditegaskan bahwa setiap pengungkapan, penyalinan, pendistribusian atau pengambilan tindakan berdasarkan isi presentasi ini sangat dilarang dan memiliki kemungkinan pelanggaran hukum. Jika anda menerima presentasi ini karena kekeliruan, harap segera hubungi kami dengan membalas email ini atau hubungi kami di alamat yang disebutkan di atas.

The information contained in this presentation is intended solely for the use of the individual or entity to whom it is addressed and others authorized to receive it. It may contain confidential or legally privileged information. If you are not the intended recipient, you are hereby notified that any disclosure, copying, distribution or taking any action in reliance on the contents of this presentation is strictly prohibited and may be unlawful. If you have received this presentation error, please notify us immediately by responding to this email or contact us at the address mentioned above.