

Tsukuba Super Science City Vision



| | |
|----------------------|--|
| Project Area | Tsukuba City, Ibaraki Prefecture |
| Project Organization | Tsukuba City, Universities / National Research Institutions, Private Companies |

Urban issues and Goals.

Project area goals, features and issues. (Smart city image)

Outline of Tsukuba City

Population

246,913 residents (3,500 residents increase per year)
114,620 households

Area

283.72 km²

Science City

150 Research Institutes and Universities
20,000 engaged in research
8,000 PhD holders

Current Issues

Polarization between the city and suburbs

- Poor mobility choices in suburbs
- Decline in liveliness around Tsukuba Station
- Not having enough places or access to do shopping because of shops closing down in suburbs

Not fully equipped to accommodate diverse culture

- Long-time residents and new residents do not interact with each other
- Everyday living is inconvenient for residents who are old, disabled, bringing up children, foreign nationals, or living in poverty

Decline in the city value

- Simultaneous aging of infrastructure and accompanying renovation
- Not fully ready for disasters
- The number of crimes remains high



What we aim for

Provide people with freedom of movement and support healthy independence



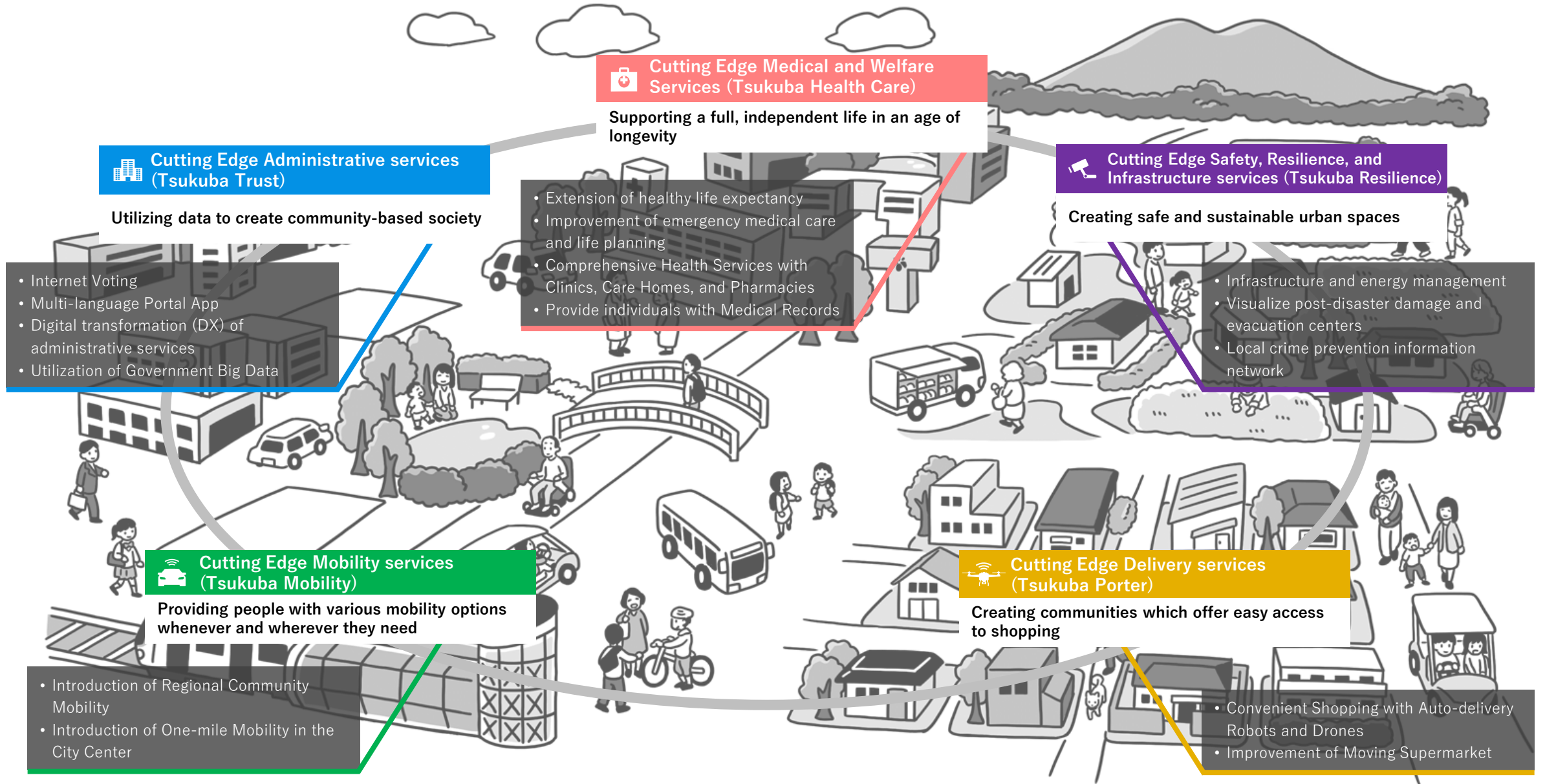
Provide people with administrative services to support each stage of their lives



Provide people with safe and sustainable urban spaces



◇ It will challenge to solve problems in cities and townships by utilizing technology and data.



◇ Implementing organization

In close collaboration and cooperation with Tsukuba Smart City Council, business partners selected through public recruitment, and other partner institutions, Tsukuba Smart City Promotion Head Office, headed by the mayor, is taking a cross-sectional approach to realize smart city visions.

Tsukuba Smart City Council

Consists of members who can contribute to solving issues of various sectors with their technologies and services



Collaborate



Overall vision

Engage in overall super city vision

Field to test ideas and products

Smart Campus

Industry-academia-government collaboration

Tsukuba Future City Project

Collaborate

Partner organizations

Partner organizations are hired through public recruitment in order to realize the vision together. We collaborate with 50 partner organizations such as national research institutes and big manufactures.

Partner institutions

Research institutes such as National Research and Development Agency and national university corporations, KEIDANREN (Japan Business Federation) and Development Bank of Japan (DBJ)

◇ Project Timeline

2019 ~ 2024

STEP 1

Ask local residents what they think about the vision through a briefing session and local referendum
Develop a scheme and infrastructure for Cutting Edge services
Improve Data Linkage Platform

STEP 2

~ 2026

Develop infrastructure and carry out demonstration tests for Cutting Edge services

STEP 3

~ 2030

Implements Cutting Edge Services in practical ways

◇ Others (Awards, selection for smart city projects promoted by the government, etc.)

- Selected as one of the SDGs City in June, 2018
- Our project was adopted as a leading model project for the Promotion New Mobility Services Project by the Ministry of Land, Infrastructure, Transport and Tourism.
- Our project was adopted as a leading model project for the Smart City Model Project by the Ministry of Land, Infrastructure, Transport and Tourism. (Our projects were adopted in 2019, 2020, and 2021.)



Facial recognition



Self-driving cars