

Takamatsu City's Smart City Vision



Mayor Hideto Onishi



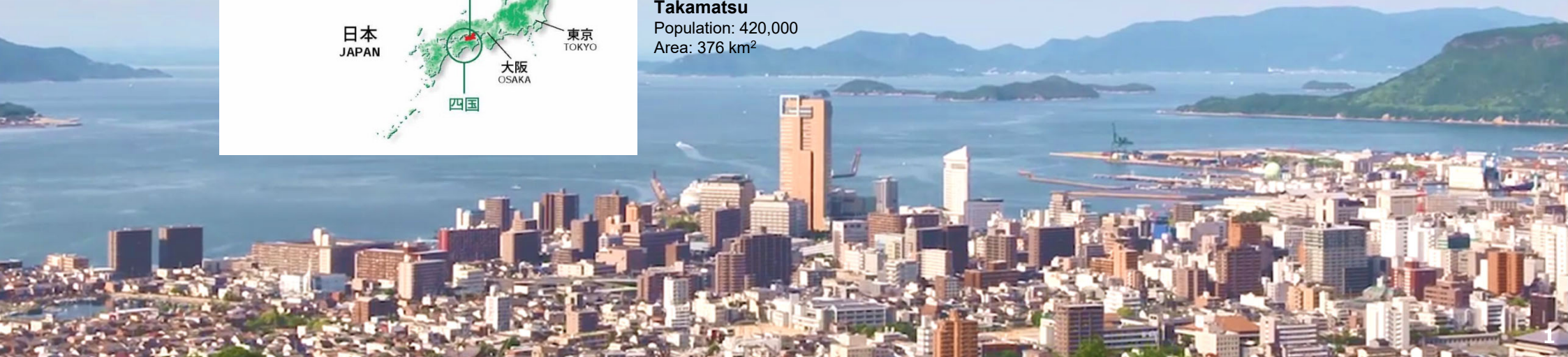
Takamatsu, Kagawa, JAPAN



The City of Takamatsu Is :

- Capital of Kagawa Prefecture
- Creating a Bountiful Living Environment with Urban Functions, Clean Water & Rich Greenery
- Situated by the Seto Inland Sea, known as the Jewel of the World

Takamatsu
Population: 420,000
Area: 376 km²



Driving Smart City Takamatsu Projects Forward



Aiming to solve regional issues and realize the Smart City Takamatsu that continues to develop sustainably by utilizing ICT and data while working together with diverse entities and sectors

Smart City Takamatsu Implementation Plan

(FY2019 – FY2021)

Since FY2017

Disaster Prevention:

Installing water level sensors to speed up response

Tourism:

Grasping the dynamics of tourists using rental bicycles

Since FY2018

Welfare/Well-being:

Watching over the elderly with wearable devices

Traffic Safety:

Identifying the location of near-miss traffic accidents

Since FY2019

Urban Development:

Installing traffic cameras in shopping districts

Human Resource Development:

Developing/training data skills workforce

Business Reform:

Offering one-stop service using video conferencing system, including condolence procedures at City Hall

Closing the Digital Divide:

Providing smartphone classes for the local residents

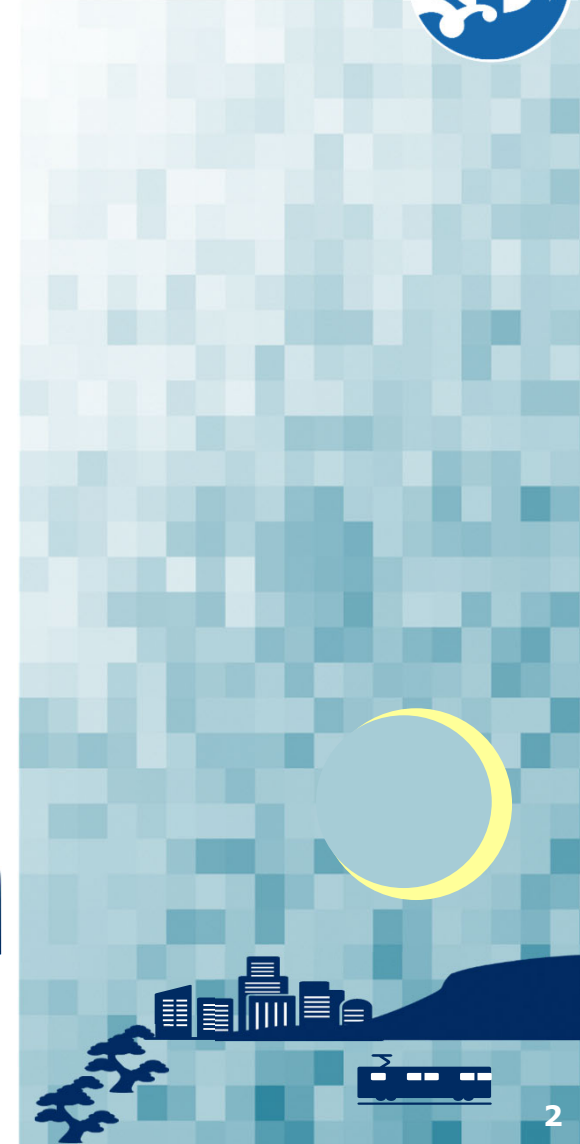
FY2020 Onward

Agriculture, Healthcare, and More!

Rolling out to Other Local Governments

IoT Common Platform (FIWARE)

Production Environment / Testing Environment / Open Data Sites



IoT Common Platform (FIWARE)

The City of Takamatsu is building an IoT common platform using FIWARE as a cross-disciplinary data linkage platform. (Takamatsu is the first municipality in Japan to introduce FIWARE.)

FIWARE: a collection of software modules that support the development and diffusion of the next-generation Internet technologies

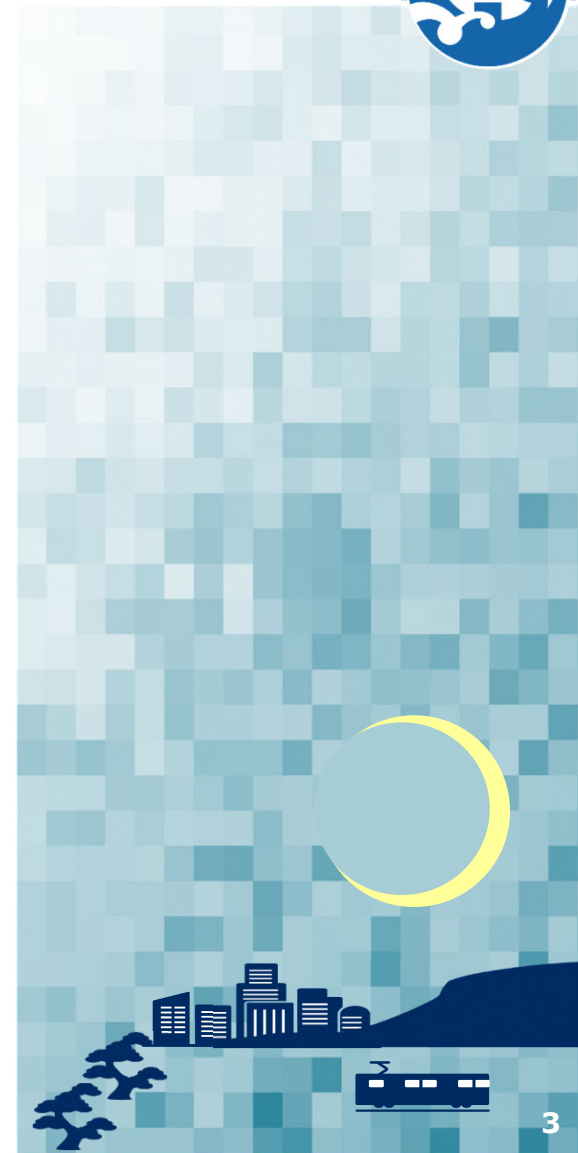
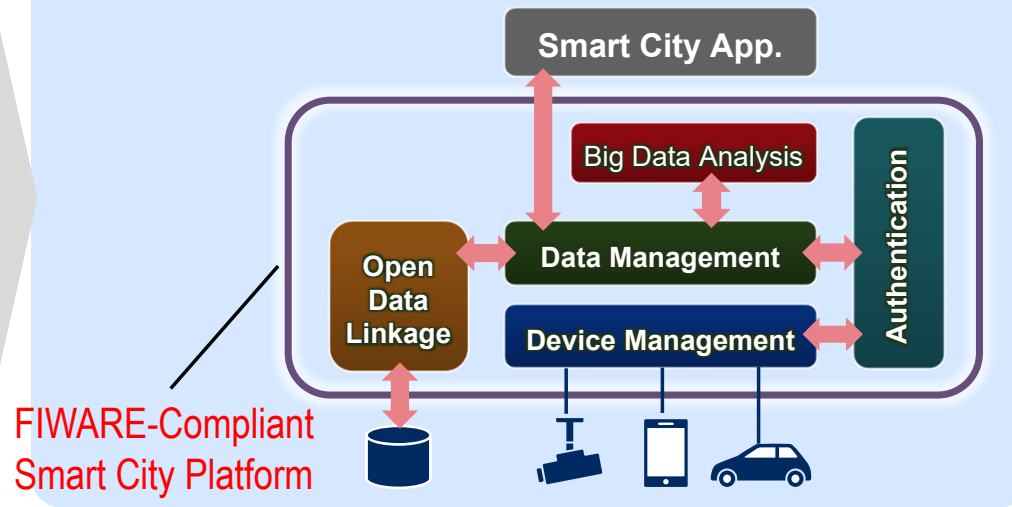
- Platform software developed in a public-private partnership project in Europe
- Open-source and license free, each module can be used in any combination
Possible to use a combination of parts outside FIWARE (*Facilitating Open Innovation*)

FIWARE Modules

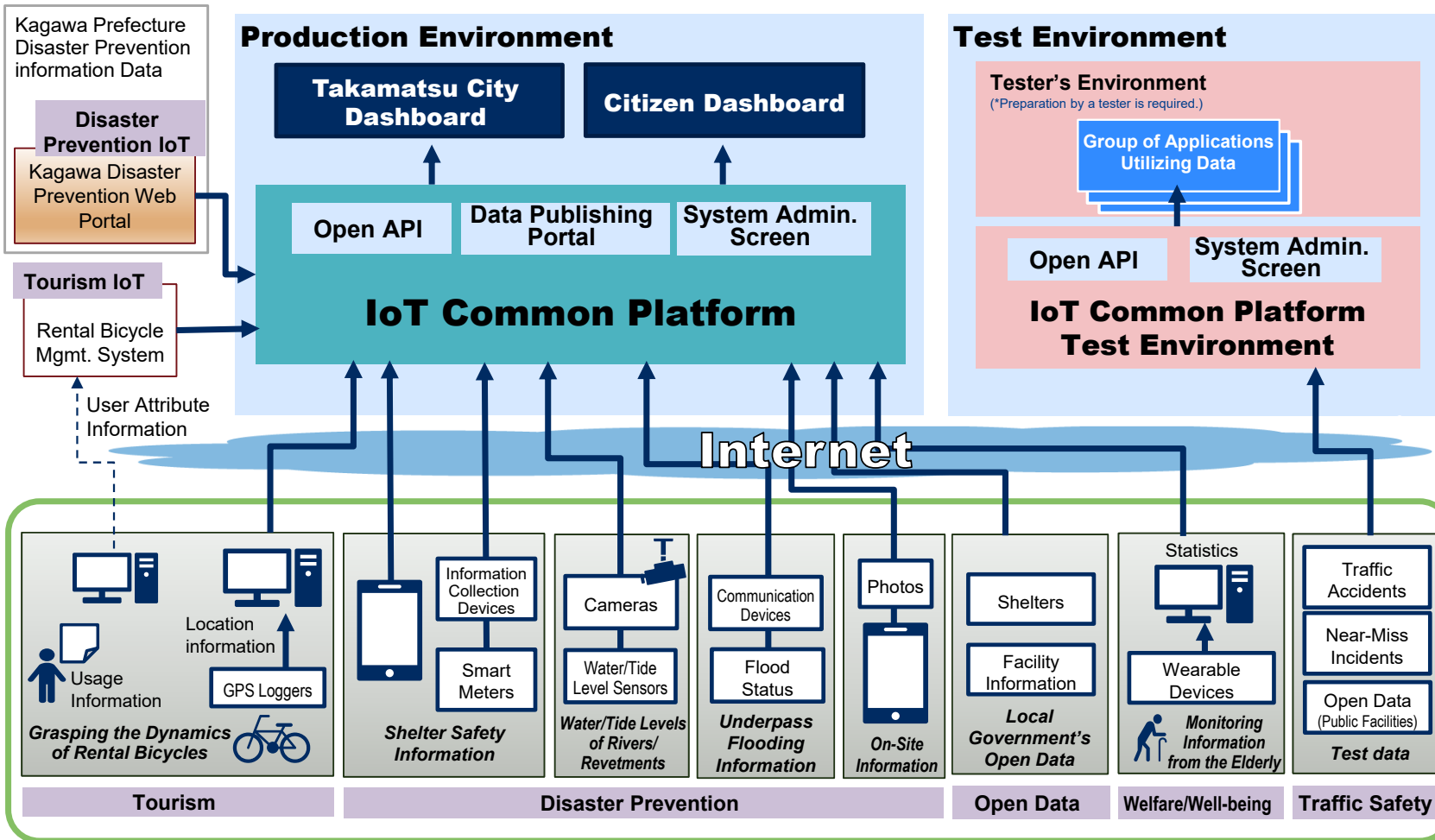


Approx. 27 Modules in 5 Chapters

Can Be Used in Any Combination to Suit the Requirements:



Overview of the System

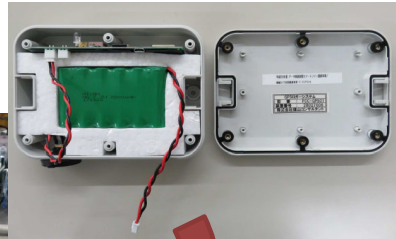


IoT Common Platform for “Smart City Takamatsu”



Water level sensors for flood control

Disaster Prevention



GPS loggers on rental bicycles

Tourism



Wearable vital sensor and cardiac rate monitor for the elderly

Welfare/Well-being

IoT Common Platform (FIWARE) Production Environment / Testing Environment / Open Data Sites



Industry
Academia
Smart City Takamatsu Promotion Council (Chair: Takamatsu Mayor)
 Private
Public

And so on...

Thank you for your attention.



あなたとつながるまちへ。

SMARTCITY

スマートシティたかまつ