

Well-Being as Ultimate Goal of Smart Cities

- Key to Bridge Civic Engagement and Digital Technologies -

Takehiko NAGUMO

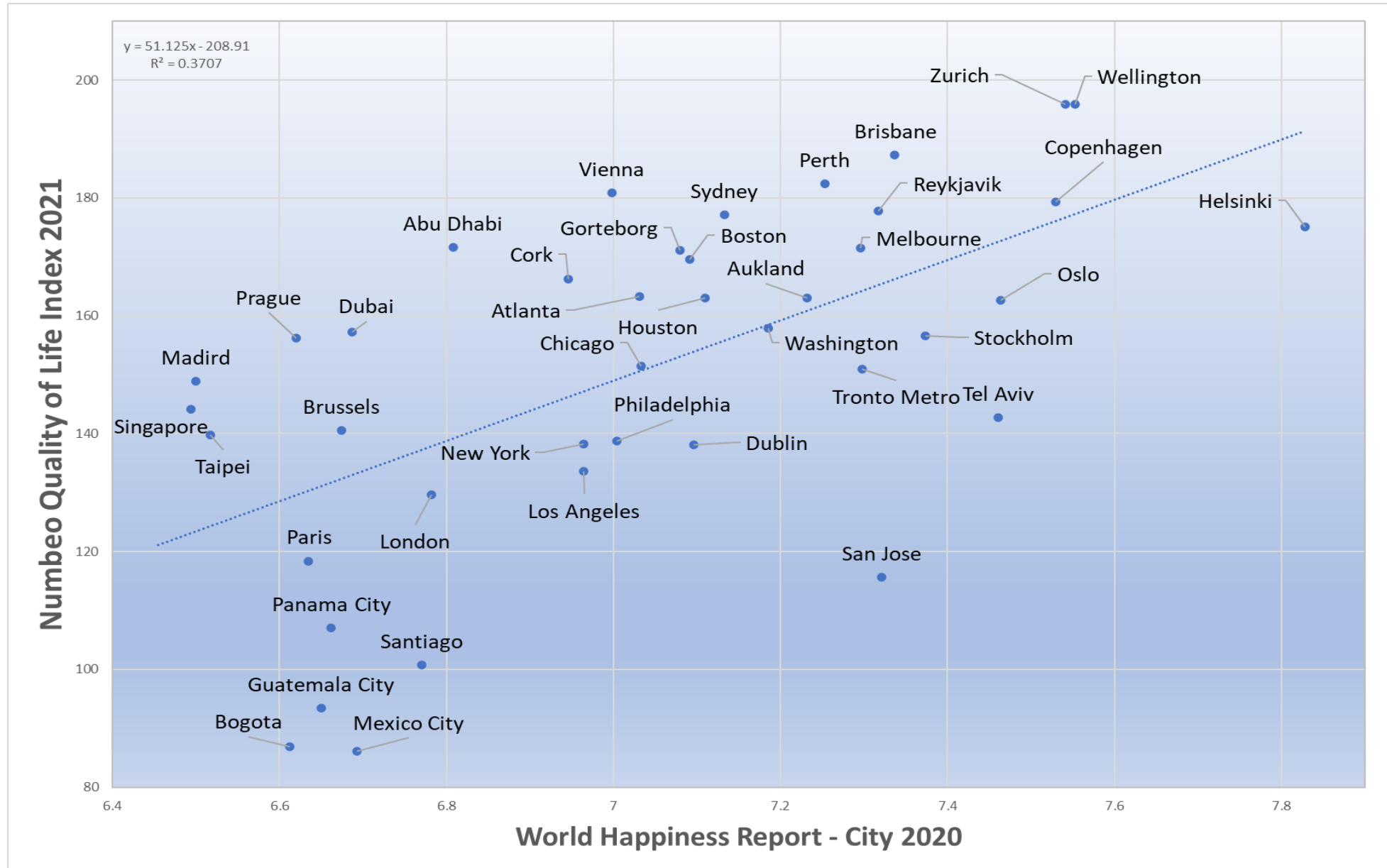
Executive Managing Director, Smart City Institute Japan

October 19, 2021

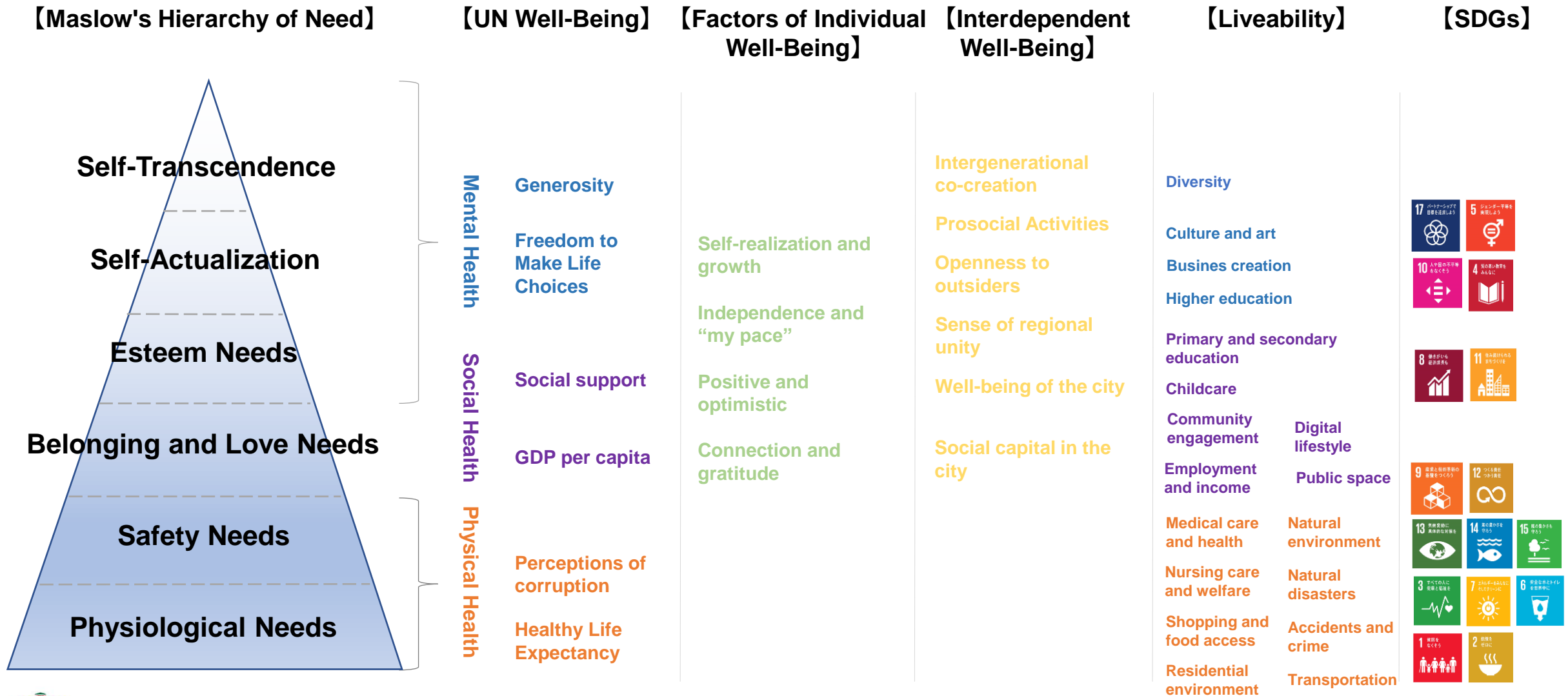


Smart City
Institute Japan

Smart Cities always Require "Well-Being" Perspective



“Well-Being” as Ultimate Goal of Human-Centered Smart Cities



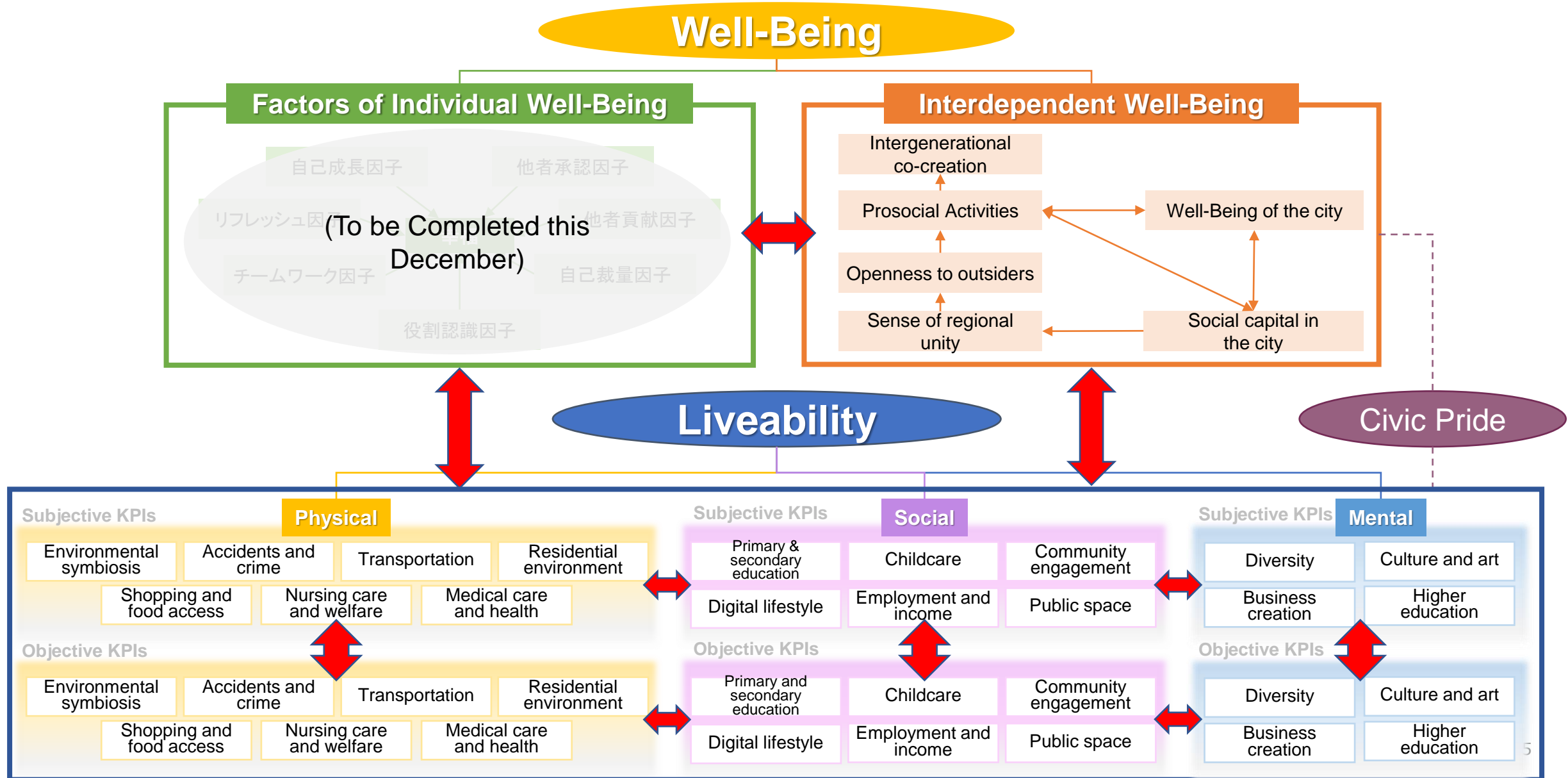
Implementing a sustainable smart city (holistic city planning) based upon human-centricity

... and "Well-Being" as Key Determinant of Civic Engagement



Implementing a sustainable smart city (holistic city planning) based upon human-centricity

Subjective Well-Being + Subjective & Objective Assessments of Liveability



Kamakura “Inclusive Future City” - Realization of the World’s Best Well-Being City -

- Aiming to create an inclusive society in which everyone can live their lives in peace and security.
- Super City development is based on sustained efforts to uphold the philosophy that predecessors have cherished. Handing over Kamakura City to the next generation with responsibility

Kamakura City's Community Development Philosophy

- "Kamakura's Unique Attitude" to create new values by actively incorporating new items while caring for old items
- “Spirits of Symbiosis” to utilize citizenship and regional strengths to bring together all elements of nature and the environment, solve local issues, and enhance the attractiveness of the city



By refining Liveable & Well-Being Indicators, which is Kamakura’s model of happiness and comfort through the PDCA cycle, Kamakura aims to build the world’s happiest symbiotic society

Modeling Kamakura’s Liveability & Well-Being as a Digital Twin

Creation of Kamakura, the World’s Best Region in the Well-Being

Challenges Facing Kamakura City and Future Vision

Disaster Prevention and Climate Change

- Large-scale sediment-related disasters and power outages
- Evacuation guidance is a major issue for earthquake and tsunami



Realizing an evacuation guidance and disaster prevention system

Traffic Congestion and Overtourism

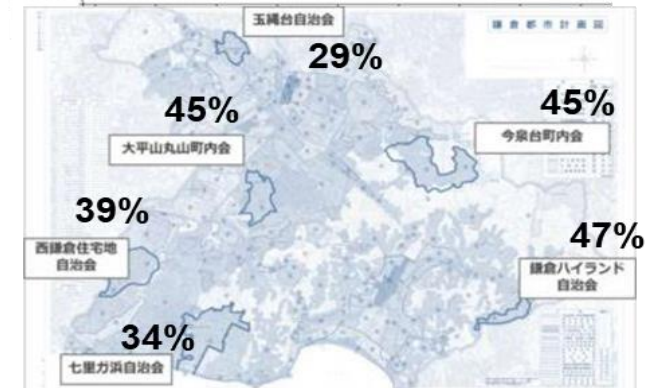
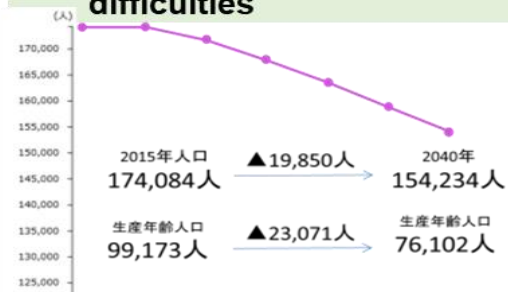
- Chronic traffic congestion and other major impacts on the lives of citizens by overtourism
- Delay in public transportation and difficulty of moving



Mainly by Road Pricing
Realizing a Smooth Moving Environment

Population Decline and Declining Birthrate and Aging population

- The percentage of the elderly in the city as a whole is approximately 31%, and nearly 50% (6 places) exist
- Inducing Transportation difficulties



Realizing a Smooth Access to Transportation and Medical Care

Realization of an inclusive society in which everyone can live their lives with safe

Three-layer Design for Realizing “Inclusive Future City”

- Kamakura Super City has a total design that organically links three layers toward the realization of “Inclusive Future City.”

Citizen participation layer

Co-create Well-Being



Well-Being

Digital layer

Solve problems digitally

Open API

Open API

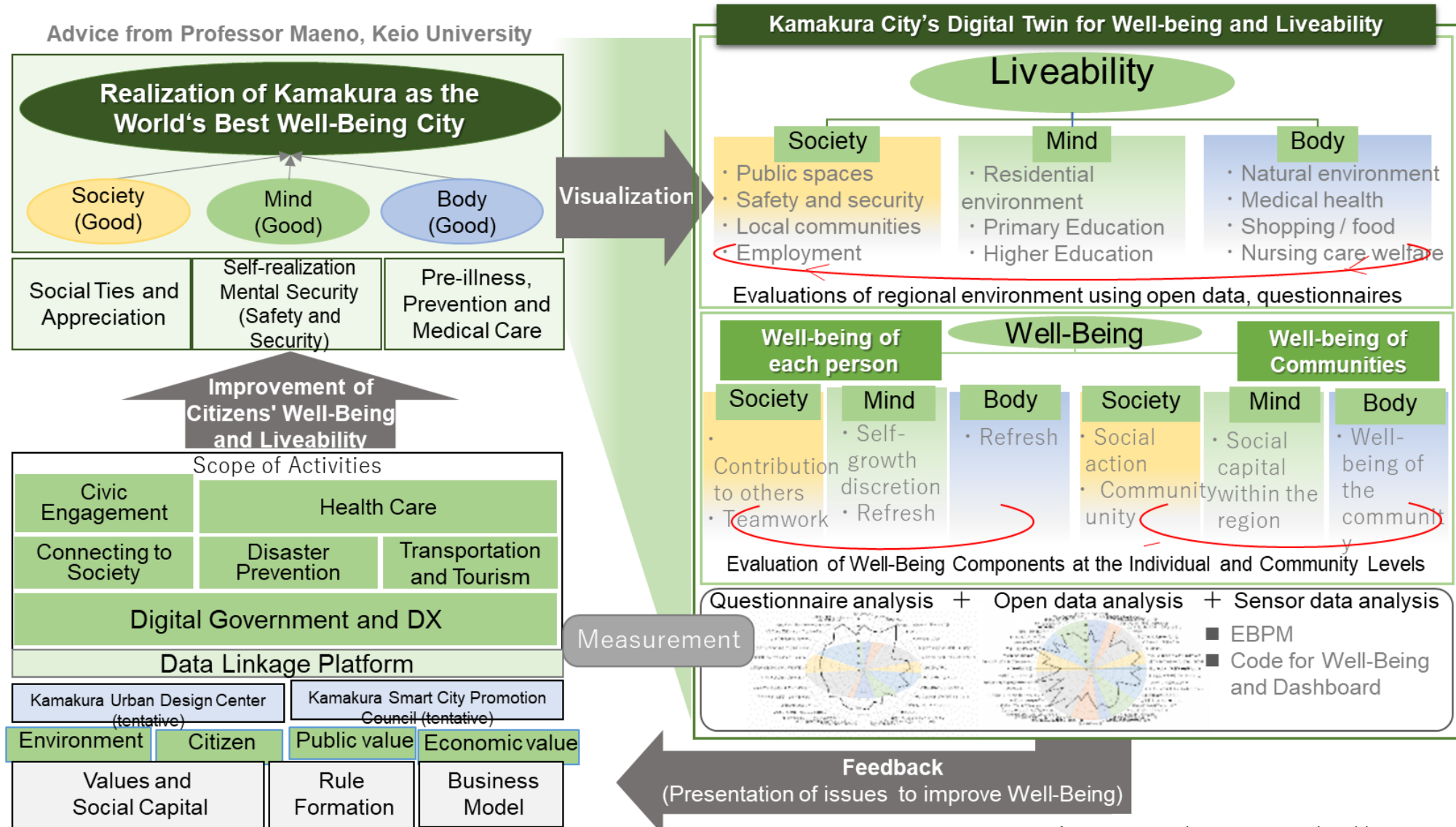


Kamakura City's concept of digital twin for Liveability and Well-Being

Creation of Kamakura, the world's best region in the Well-Being

Measure and Share Well-Being & Liveability KPIs to Co-Create Smart City

- Continuously evolving supercities by visualizing Well-Being based on Kamakura's culture and history and quantitative evaluations.



Thank You



Takehiko Nagumo

- **Currently, Executive Managing Director at Smart City Institute Japan, dedicated in designing policies and building strategic alliances for smart cities and digital government.**

- **Concurrently,**
 - **Senior Managing Executive Officer at Mitsubishi UFJ Research and Consulting, Ltd**
 - **Regulatory Reform Promotion Council Member, Japanese Government's Cabinet Office**
 - **Incorporated Administrative Agency Evaluation System Committee Member, Mistry of Internal Affairs and Communications**
 - **Industrial Structure Council Member, Ministry of Economy, Trade and Industry**
 - **Advisory Board Member, Digital Architecture Design Center, Information-Technology Promotion Agency**
 - **Fellow, World Economic Forum The Fourth Industrial Revolution Japan Center**
 - **Smart City Advisor to local government of Tokyo, Kamakura, Hamamatsu, and Higashi-Hiroshima**
 - **Adjunct Professor at Kyoto University Graduate School of Management**
 - **Adjunct Professor at Tokai University**
 - **Visiting Professor at Tallinn University of Technology in Estonia**
 - **Senior Industry Fellow at Royal Melbourne Institute of Technology**
 - **Senior Visiting Fellow at Global Communication Center (GLOCOM), International University of Japan**

- **Earned Master of Business Administration from Georgetown University, Master of Science in Development Finance from University of London SOAS, and LL.B in Political Science from Keio University. Also completed Professional Fellow Program at Columbia University.**

- **Contact**
 - **Smart City Institute Japan (SCI-J)**
Email: takehiko.nagumo@murc.jp <https://www.sci-japan.or.jp/english/index.html>