

# Luang Prabang City, the World Heritage Site of Lao PDR



## Luang Prabang:

- UNESCO Heritage Site since 1995
- One of the 3 secondary cities of Laos
- Total city population: 97,760
- Total city area: 761 km<sup>2</sup>
- 115 villages (urban area 65 villages)
- 14,972 families

Presented by:

**Mr. Yengher VACHA**, Coordinator of International Cooperation, Luang Prabang City

[yenghervacha@hotmail.com](mailto:yenghervacha@hotmail.com)

# Solid Waste Management



## Existing Situation:

- Waste collection covers 80 villages
  - 40 villages operated by Urban Service Office of Luang Prabang City
  - 40 villages operated by private company
- Landfill site located 8 km from the city center
- 3Rs (Reuse-Reduce-Recycle) activities implement in guesthouses-hotels, schools, public buildings, etc
- Public solid waste collection campaign organizes in every weeks and every in important events.

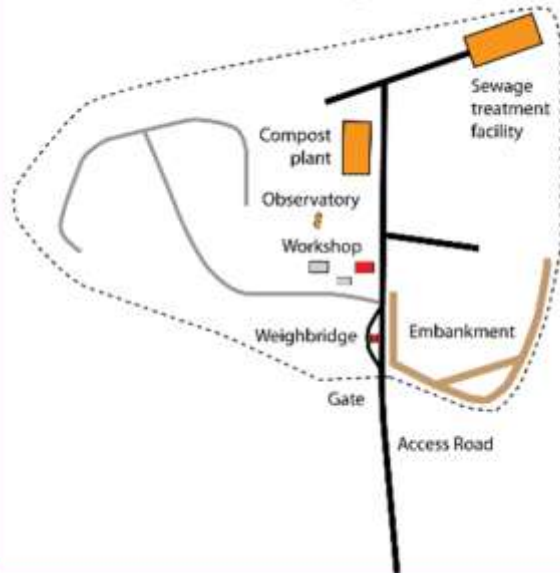
# Pilot Project: Solid waste management under LPPE project



- Landfill improvement
- Waste segregation activities (3Rs)
- Sludge disposal site
- Garbage bins provision
- Solid waste collection trucks provision
- Etc.



Landfill Site KM8 in Luang Prabang District



ໃສ່ໃຈ - ຫຼວງພະບາງ  
Luang Prabang - Handle with Care



Implemented by  
**giz**

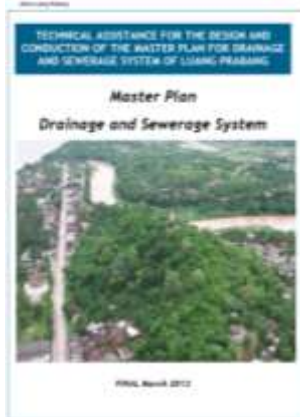
# Luang Prabang Handle with Care



# Pilot Project of Wastewater Management

## Current situation:

- Drainages almost constructed in the city center
- Wastewater mostly discharged directly to the drainages and rivers
- Wastewater and storm water in the same drain
- All most households have own septic tank for toilet



## Master Plan for Urban Drainage and Sewerage Systems

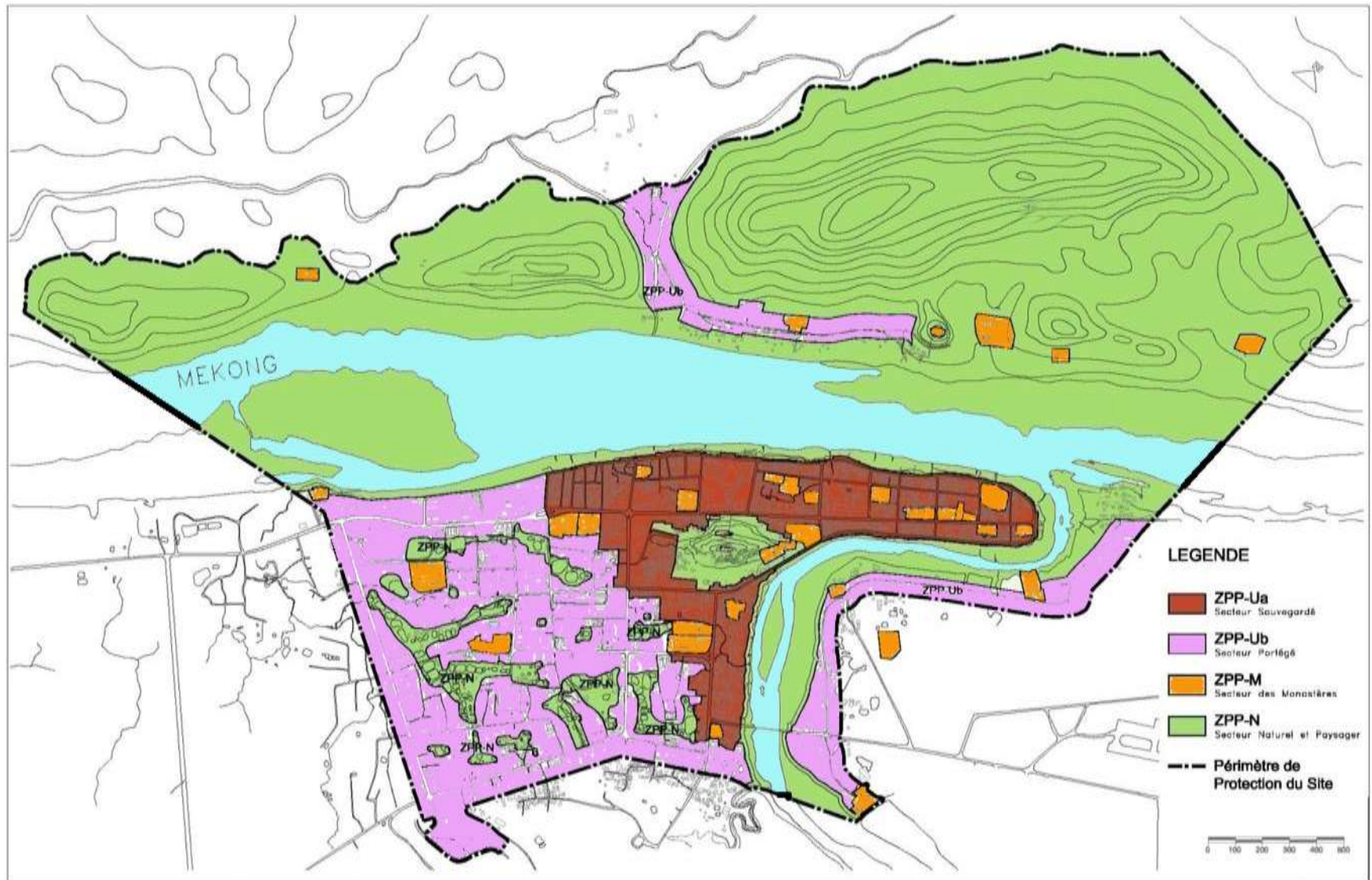
- Project: Luangprabang Urban Development and Management (PADUL)
- Grant: French Agency for Development (AFD)



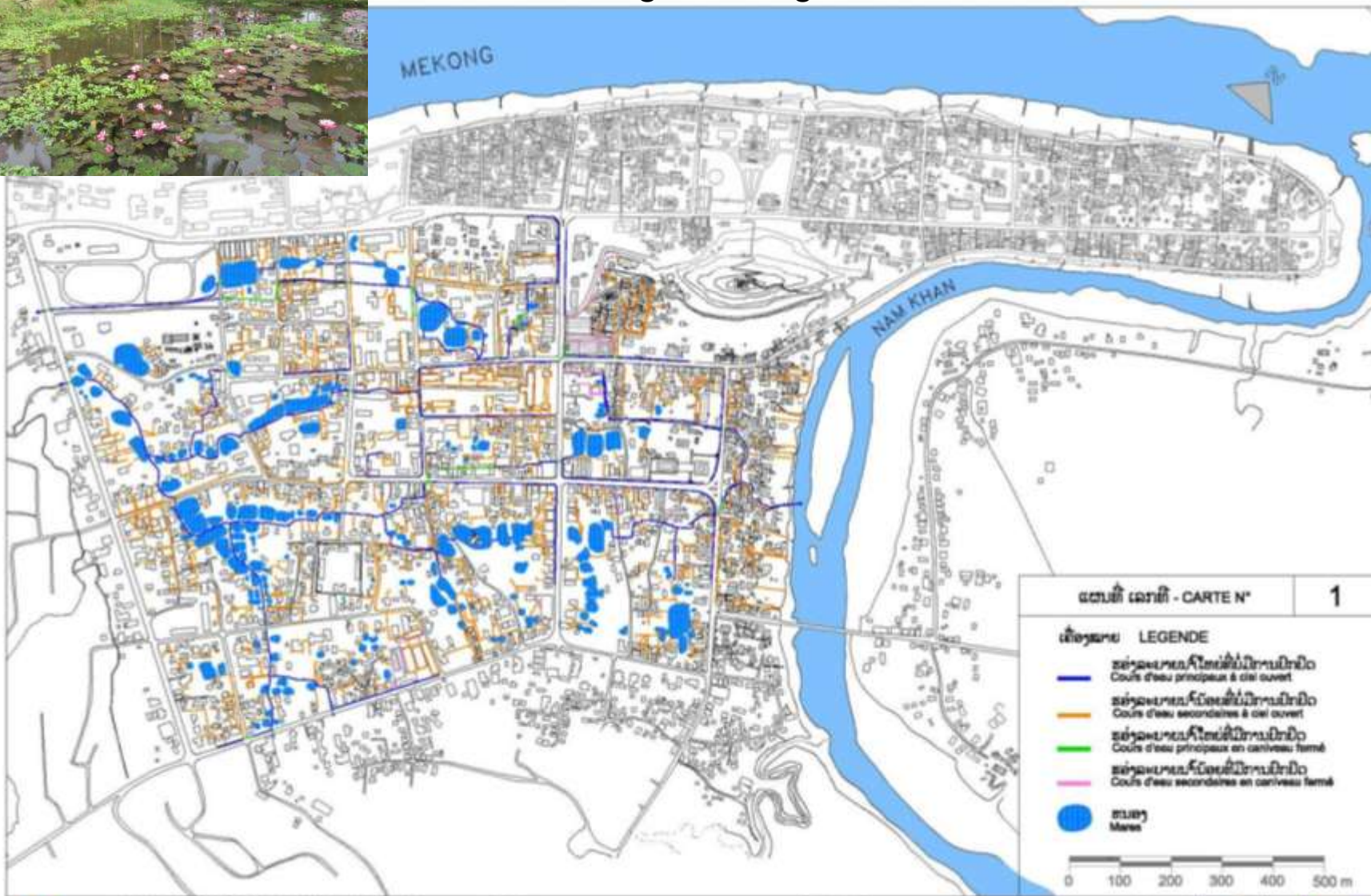
## Decentralized Wastewater Treatment Systems (DEWATS)

- Project: ASEAN Environmental Sustainable Cities Programme
- Grant: Japan-ASEAN Integration Fund (JAIF)

# Green Spaces and Wetlands Management



More than 100 **wetlands** registered as a component of natural and social activities that formed the world heritage site of Luang Prabang



ສະຖານະ ເມືອງເລກທີໂລກ ສູນວັດທະນະທຳ  
Luang Prabang, ville du Patrimoine Mondial de l'UNESCO  
ໂຄງການຮັກສາເຂດນ້ຳ  
Programme de restauration des zones humides



ສື່ສານມໍລະດົກ ເດືອນ 6 ປີ 1999  
La Maison du Patrimoine Juin 1999



ການໄຫຼຂອງນ້ຳ  
Réseau hydrographique



# Pilot Project of Wetlands Management



- Project: Urban Development and Management (PADUL)
- Grant: French Agency for Development (AFD)



## Year 2018

- Construct main drainages to drain storm water and wastewater to mitigate flood during the rainy season
- Recover wetland areas for storm water retention, wastewater treatment, and habitats





# Pilot Project of Wetlands Management



- Project: Capacity Enhancement for Sustainable World Heritage Management and Preservation in Luang Prabang (CEML)
- Support: Japan International Cooperation Agency (JICA)



## CEML JICA Project Year 2019-2012

- a short term expert and the assistants activities of pond water improvement and monitoring



## Sanitation and integrated urban wetlands management

Year 2020 - 2023

- Granted support from France
  - Feasibility study and detail design
  - Pilot project construction



20  
years  
1995-2015



World Heritage Site

World Top Tourism City

ASEAN ESC Model City

# Thank You for Your Attention !

## Top awards:

- ✓ Gold Wanderust Travel Award 2006, 2007, 2008, 2011, 2012, 2015, 2019
- ✓ ASEAN Environmentally Sustainable Cities Award 2008, 2014, 2017
- ✓ ASEAN Sustainable Tourism Award 2018

