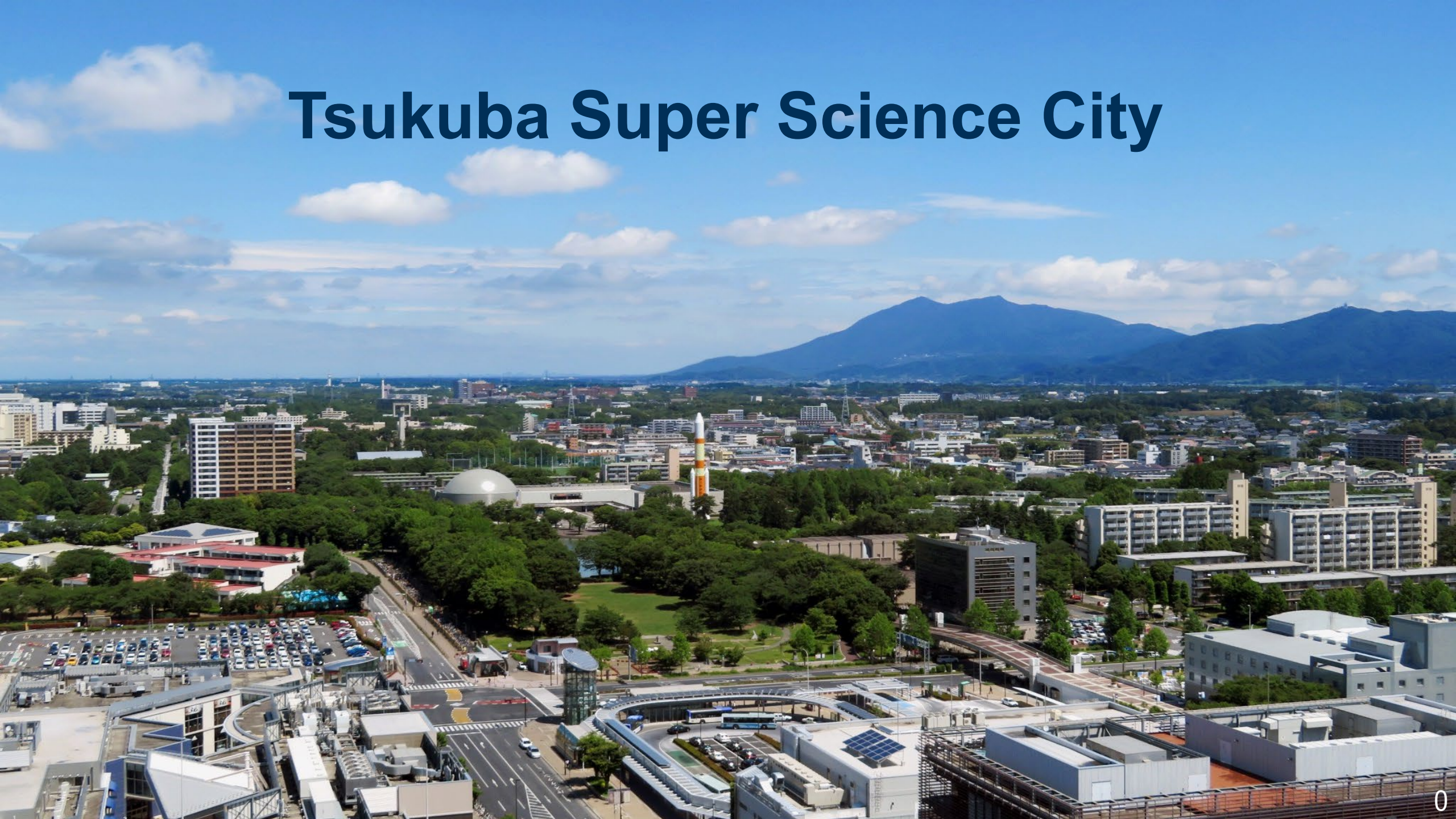


Tsukuba Super Science City



The profile and vision of Tsukuba City

City Profile

Outline of Tsukuba City

- 251,000 residents
(5,000 residents increasing per year)
- 20,000 engage in research
(8,000 PhD holders)
- 4 Nobel-Prize winners
- 150 Research Institutes and Universities
- 10,000 Foreign residents
(from 150 countries)

City Vision: Tsukuba Future Plan 2020-2050

“A city with Science and Technology for citizens”



*Exploring
Tomorrow.*
TSUKUBA

Aiming to become a
super city as a solution

Tsukuba Super Science City



In the spirit of “Leave No One Behind”, the city will

- Connect between citizens and government,
- Bring out each person’s diversified abilities,
- Combine knowledge of world-class science and technology



Mayor
Dr. Tatsuo Igarashi



Architect
Dr. Kenji Suzuki
(Prof. Univ. Tsukuba)

Become a super city for all citizens to solve social problems

Mobility, Delivery 	<ol style="list-style-type: none"> (1) Regional Community Mobility (2) Complex-MaaS in the City Center (3) Convenient Shopping with Auto-delivery Robots and Drones (4) Improvement of Supermarkets on Wheels
Government 	<ol style="list-style-type: none"> (1) Internet Voting (2) Multi-language Portal App (3) DX of Paper Work at City Hall (4) Open Government Big Data
Medicine, Welfare 	<ol style="list-style-type: none"> (1) Promotion of Healthy Life by Medical and Daily-Life Information (2) Improvement of Emergency Treatment (3) Returning Personal Medical Records
Safety, Resilience, Infrastructure 	<ol style="list-style-type: none"> (1) Prompt evacuation guidance and medical coordination (2) Management of Infrastructure and Energy (3) Regional Anti-Crime Information Network
Digital twin 	<ol style="list-style-type: none"> (1) Establishment of pioneering 3D digital infrastructure (2) Collection and utilization of maps, geographic data, BIM data, etc.
Open hub 	<ol style="list-style-type: none"> (1) Support for foreigner’s entrepreneurial activities (2) Simplify procurement procedures

Our initiatives so far

Online Voting



Delivery Service By Automatic Robots



Social Participation of People with Disabilities through the Use of Robots

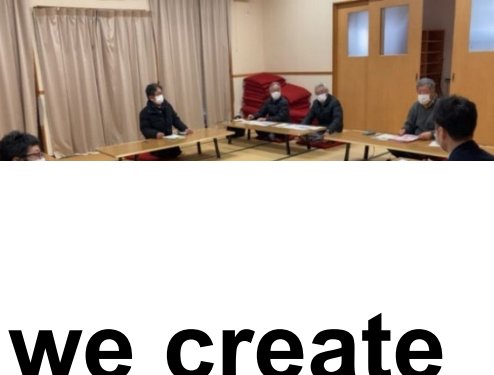
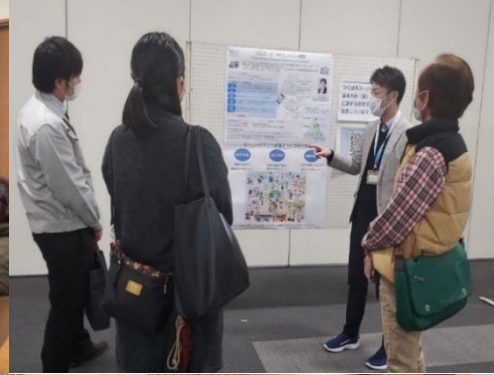


Digital twin for Robots and disaster



A photograph of a concrete bridge over a river. In the foreground, a person wearing a white hard hat with a headlamp and a high-visibility yellow safety vest is seen from the back, looking towards the bridge. A drone is flying in the air above the bridge. In the background, there are mountains under a cloudy sky.

Bridge inspection using a drone



Together we create

