

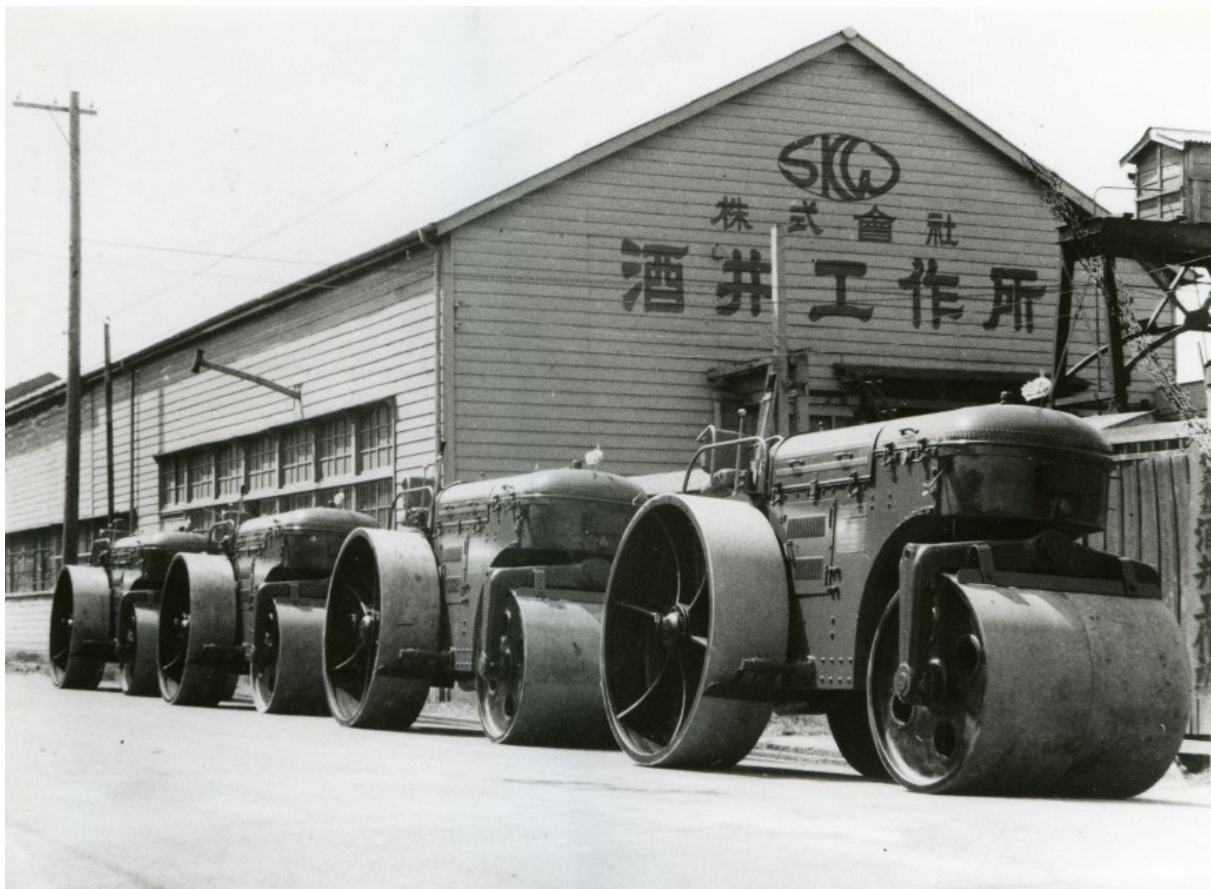
SAKAI

MASTERS OF COMPACTION

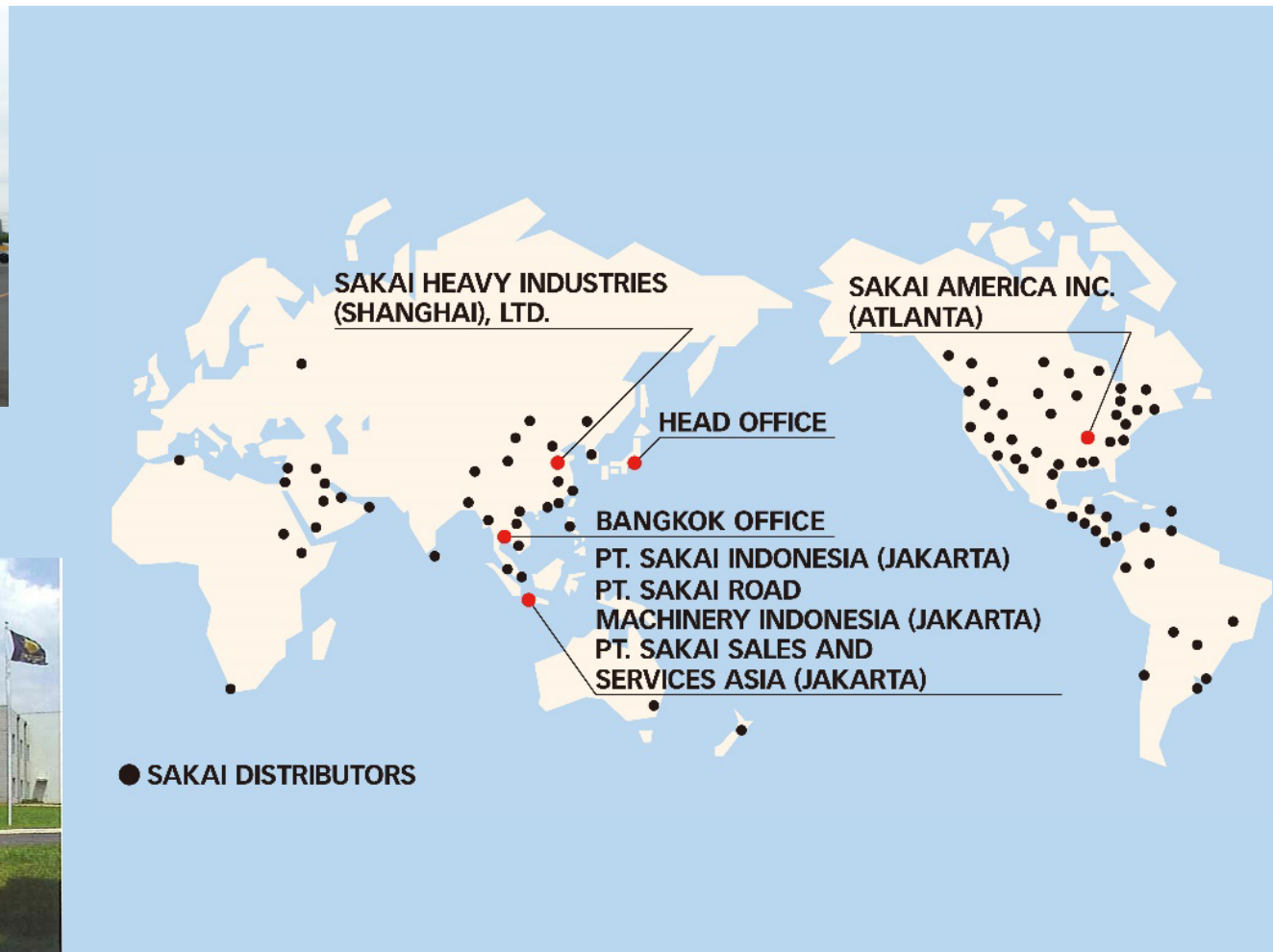
COMPANY INTRODUCTION



History



Global Network



Technology of SAKAI



1

Compaction Meister
Compaction Performance
(Density) Control

Quality UP



2

**Autonomous
Vibration Roller**

Less Operator



3

Guardman
The emergency brake system

Safety First



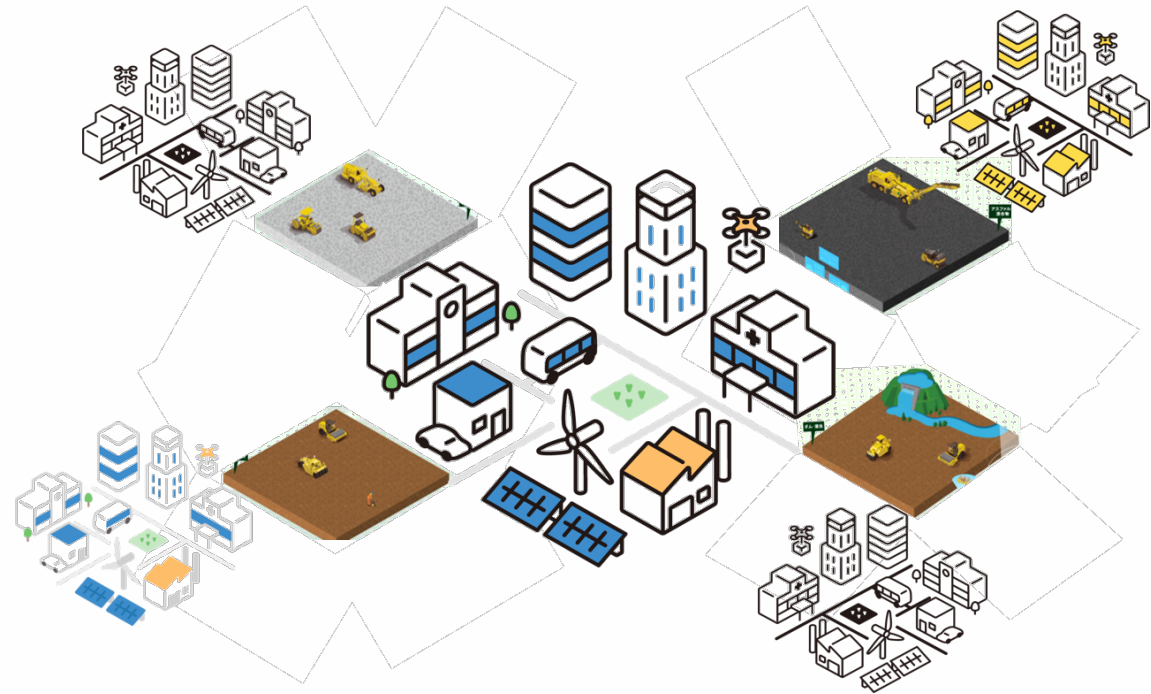
4

EV Drive Roller

Carbon Neutral

Smart city connection

**Need to connect
between Smart city
and Smart city**



Stabilizer Method

PM550-s

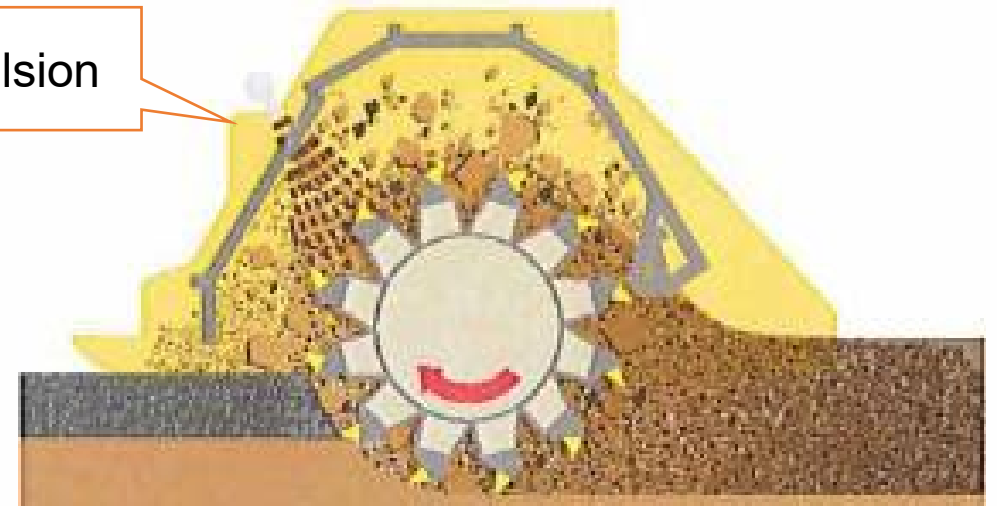
Repairing strength of base course with additives as cement and/or asphalt emulsion during crushing of remaining materials.



Asphalt Emulsion

3 types of road Stabilizer Method

Soil road, Gravel road, Damaged asphalt road



3 types of Stabilizer Method



Soil Road



Granular Road



Damaged Paved Road

Job-site in Japan (Condition of Construct)

Road Width 5.5m (2 lanes)

Distance of job-site 120 m / 2 day (330m²/ day)

Thickness of asphalt pavement 10cm

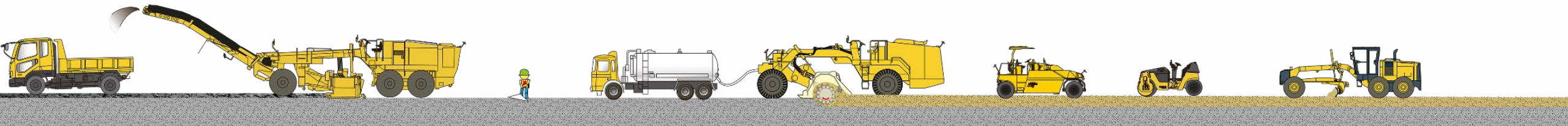
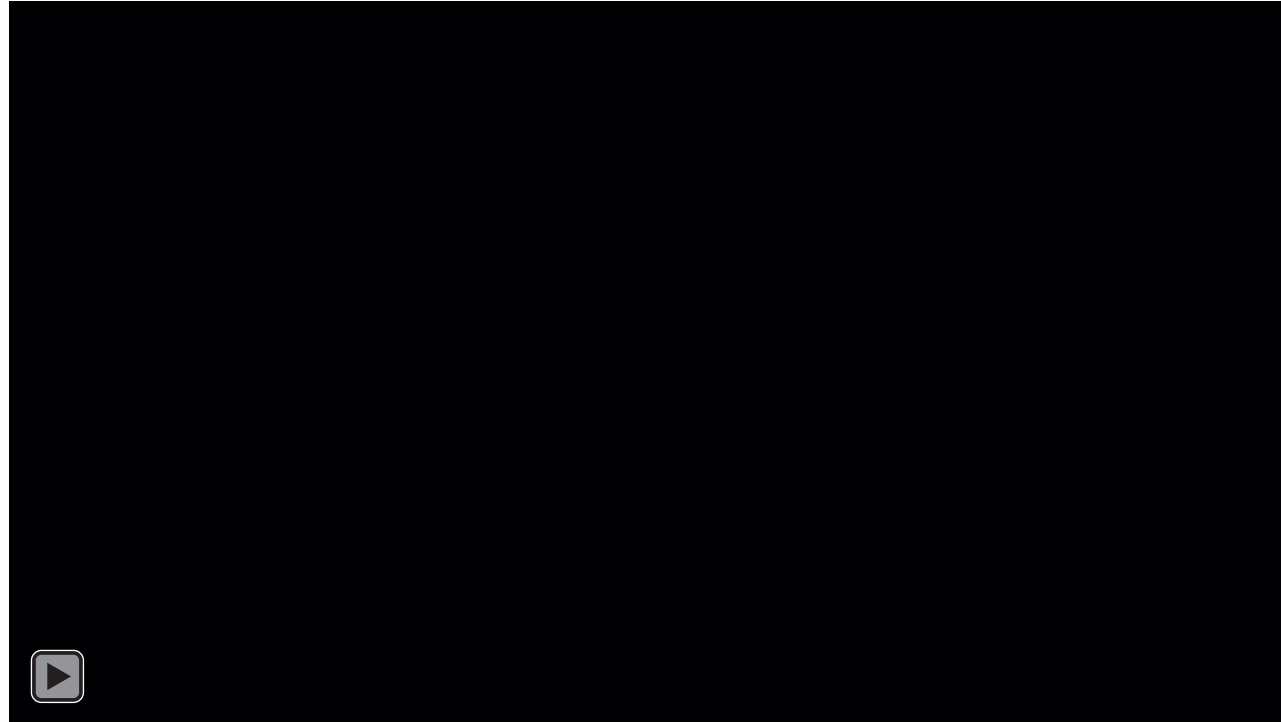
Mixture depth 150 mm by stabilizer

- +Remained asphalt 5cm
- +Cement content 5.5kg /1m²
- +Asphalt emulsion content 5.1%)

Before on site
@Koshigaya city in Saitama Prf.



Work scenes of the road stabilizer.



Job-site in Japan (Condition of Construct)

After reconstructing base course with resilience by Stabilizer, and finishing with asphalt pavement with recycled mix-asphalt.



Life cycle cost estimation (simulation)

Case: Small maintenance cost/ necessary for every 3 years small maintenance

Years	0	3	6	9	12	15	18	21	24	27	30	33	36
Initial	40	40	40	40	40	40	40	40	40	40	40	40	40
Total	40	80	120	160	200	240	280	320	360	400	440	480	520

Case: One maintenance by Stabilizer every 15 years

Years	0	3	6	9	12	15	18	21	24	27	30	33	36
Initial	100	0	0	0	0	100	0	0	0	0	100	0	0
Total	100	100	100	100	100	200	200	200	200	200	300	300	300

Save the Cost



Training

1

Structural Design

Based on the country's design method



2

Mix Design

Testing method design procedure

3

Construction Procedure

Training of engineer and operator



Conclusion

SAKAI Stabilizer is available for

- +Shortened terms of job-site
- +Construct with good condition and long life road
- +Construct all weather road from soil and granular road
- +Construct strong structure road from disaster
- +Maintenance of damaged asphalt paved road
- +Road management with stabilizer technology transfer by special trainings from SAKAI

Roads must be built. Worlds must be connected.

Thank you for your attention



SAKAI

MASTERS OF COMPACTION

COMPANY INTRODUCTION

