

Company Profile

| | | | |
|-----------------|---|--------------|---|
| Name in Full : | Scheme Verge, Inc. | Head Office: | Todaimae Hiraku Gate, 401 2 Chome-3-10 Mukogaoka, Bunkyo City, Tokyo 113-0023 |
| Establishment : | July 2018 | Telephone: | +81 50 3702 1984 |
| Capital : | 100 million yen | President : | Tatsuki Yamanami |
| Employees : | 10 | Website: | https://www.schemeverge.com/ |
| Clients : | Shimizu Corporation, Fujita Corporation, Toda Corporation, Maeda Corporation, Mitsui Fudosan, Mitsubishi Estate Company, Tokyu Land Corporation, Nomura Real Estate Holdings, Keio Corporation, Kobe City, Sakura City, Shunan City, Osaka Prefecture | | |

Providing Services

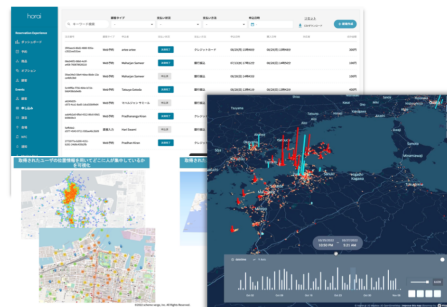
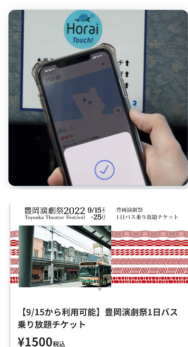
Horai is a one-stop solution for sustainable area management through Data and AI. In the dynamic world of local tourism, we tackle the challenge of inspiring visitors to explore the entire region rather than just the usual hotspots. With our digital tools, we decode the concerns of tourists and provide valuable insights to local governments, enabling area revitalization.

For tourists (ToC), Horai offers a seamless experience through our apps and web services. In Horai you can effortlessly uncover local attractions, create personalized itineraries, book transportation, and even use electronic tickets. Our system also supports local currencies and distributed ledgers while delivering tailored recommendations. Multilingual support is in place, and we continuously evolve based on customer needs.

For businesses (ToB), our console empowers you to manage resources, inventory and tickets efficiently. The business owners can dive deep into user preferences, location data, and marketing insights. With a customizable interface, you can delegate tasks as needed making communication with stakeholders efficient to handle through showing them on-time data. Whether you run a single store or collaborate with a broader network, Horai console is designed to accommodate everyone from startups to well-established corporations.

For End-User:  horai アプリ・ウェブ

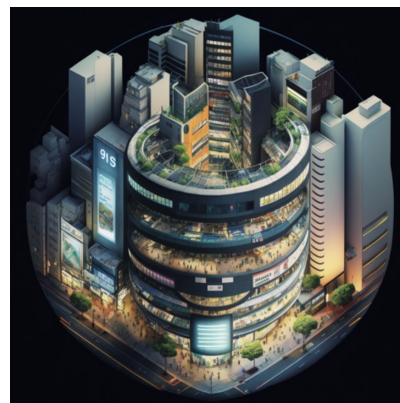
For Business-User:  horai コンソール



※ Figures may be slightly different because of development

Project Achievement / Technical Expertise

Horai has already established itself as a comprehensive, data-driven urban development platform. It can aggregate and analyze data on the movement of users within each facility, including records of previous and subsequent transportation use, and even security records for offices and residences. It can collect and analyze behavioral data for an entire area. The system has been installed not only in commercial and tourist facilities, but also in office buildings, housing complexes, and even hospitals, making it a highly versatile urban development and management platform. Furthermore, the results of the analysis of end-user behavior data can be reflected in inventory management in the retail and service industries, transportation, etc., to optimize the city from both supply and demand perspectives.



contact person

Eitaro Suda, Khamida Malianchinova (alliance@schemeverge.com)